

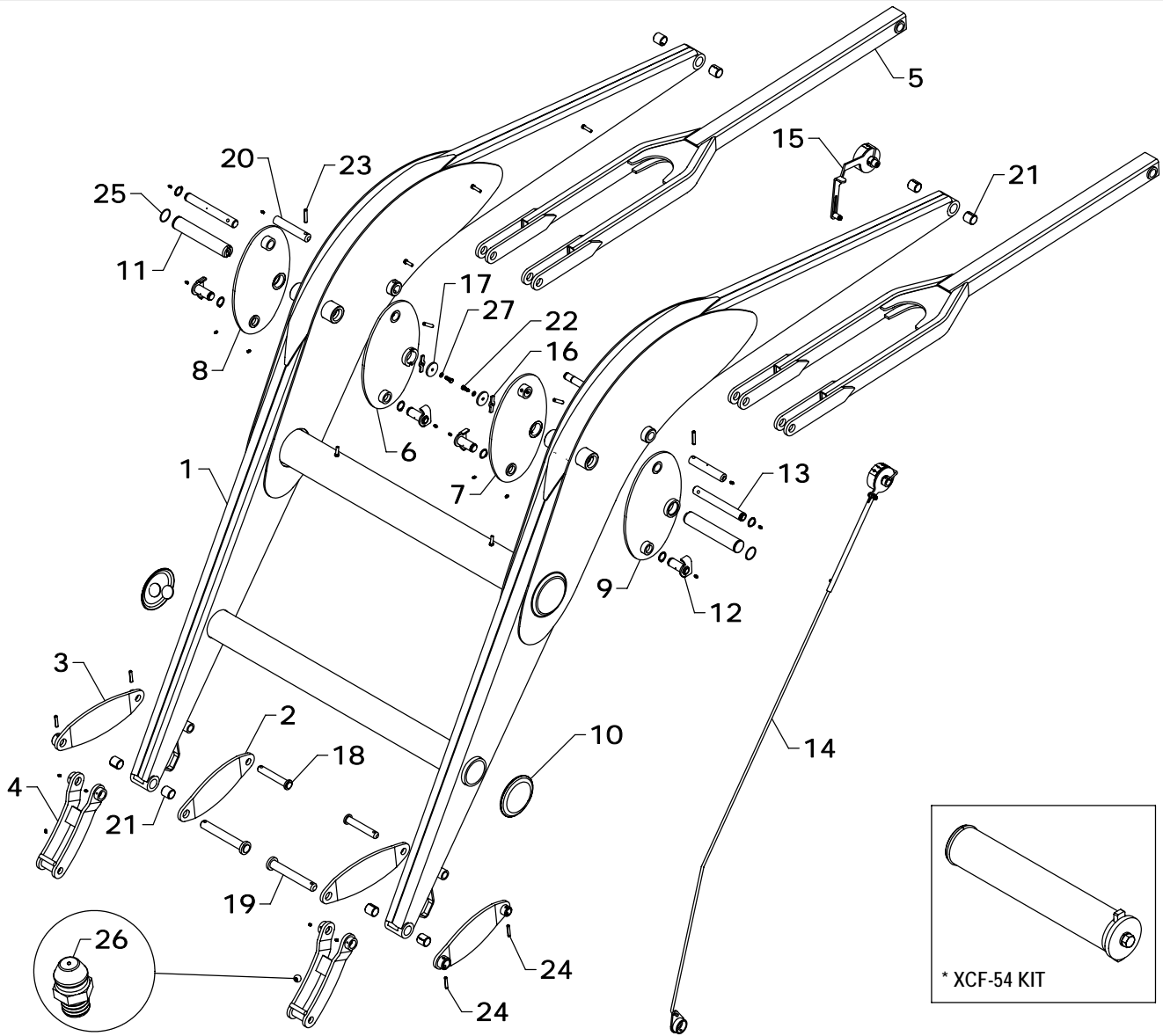
XTA-700B LOADER TOWER REPLACEMENT PARTS

REF #	PART #	DESCRIPTION	QTY.
1	XCT-12AS	TOWER	1
2	XAT-25AS	LATCH	2
3	XAF-54	LINKAGE PIN	5
4	HHS1011040	5/8" X 2 1/2" BOLT	2

REF #	PART #	DESCRIPTION	QTY.
5	HTN1011	5/8" LOCK NUT	4
6	RLP0700036	7/16" ROLL PIN	6
7	XAF-154	PIN	1
8	ZER1805	GREASE FITTING	6

WESTENDORFMFG PWB212050

WESTENDORF MFG CO., INC. • PH: (712) 423-2762 • FAX: (712) 423-1460 • sales@westendorfmfg.com • www.loaders.com



XTA-700B LOADER FRAME REPLACEMENT PARTS

REF #	PART #	DESCRIPTION	QTY.
1	XCF-4AS	FRAME	1
2	XCF-10	BUCKET LINKAGE	2
3	XCF-10AS	PIVOT STRAP	2
4	XCF-15AS	BUCKET LINKAGE	2
5	XCF-23AS	SELF LEVELING TUBE	2
6	XCF-29AS - R	INSIDE SELF LEVELING PLATE (RIGHT)	1
7	XCF-29AS - L	INSIDE SELF LEVELING PLATE (LEFT)	1
8	XCF-30AS - R	OUTSIDE SELF LEVELING PLATE (RIGHT)	1
9	XCF-30AS - L	OUTSIDE SELF LEVELING PLATE (LEFT)	1
10	XCF-47AS	CROSS PIPE CAP	2
11	XCF-54	KEYED PIN	2
12	XCF-56AS	LOCK PIN	4
13	XCF-125	PIN	2
14	LAC-15-11	ROTATIONAL BUCKET INDICATOR	1

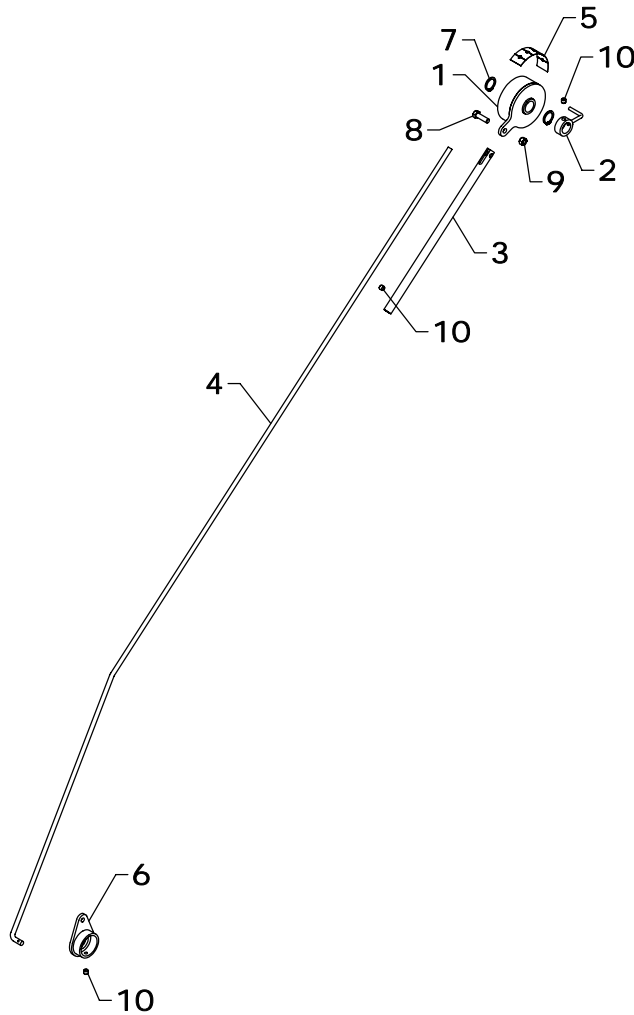
REF #	PART #	DESCRIPTION	QTY.
15	LAC-25-01	ROTATIONAL HEIGHT INDICATOR	1
16	FMT-303	PIN LOCK	2
17	FMT-304	HOLD DOWN	2
18	LMF-28AS	PIVOT PIN	2
19	LMF-125AS	ROUND HEAD PIN	2
20	XAF-54	LINKAGE PIN	2
21	LW-32	INSERT BUSHING	8
22	HHS0616016	3/8" X 1" BOLT	2
23	RLP0700036	7/16" ROLL PIN	4
24	DRP0600032	DOUBLE ROLL PIN	4
25	SR-B16	2 1/16" O.D. WIRE RING	2
26	ZER1805	GREASE FITTING	18
27	LWM06	3/8" LOCK WASHER	2
28	SR-C10	SNAP RING	6

NOTE: * When ordering replacement pin, order XCF-54 KIT.
XCF-54 KIT includes 11 (1), 16 (1), 17 (1), 22 (1), 25 (1), and 28 (1).

WESTENDORFMFG PWB212050

WESTENDORF MFG. CO., INC. • PH:(712) 423-2762 • FAX: (712) 423-1460 • sales@westendormfg.com • www.loaders.com

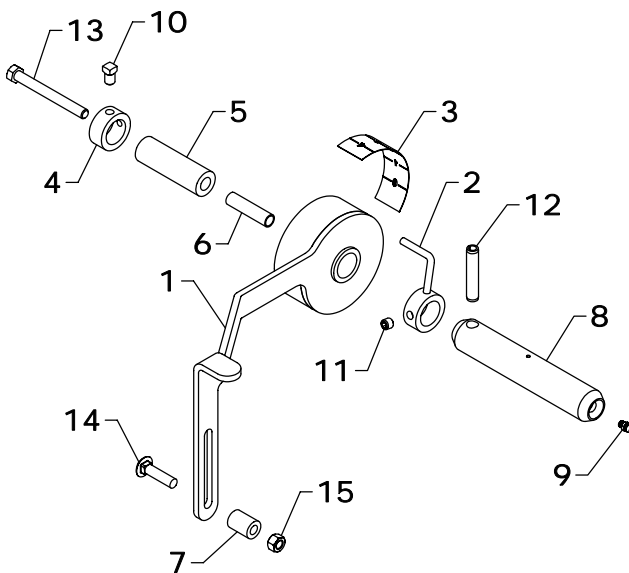
ROTATIONAL BUCKET INDICATOR



LAC-15-11			
REF #	PART #	DESCRIPTION	QTY.
1	GRD-101AS	BUCKET INDICATOR	1
2	GRD-2AS	POINTER	1
3	GRD-105	GAUGE ROD HOLDER	1
4	XCF-49	GAUGE ROD	1
5	DE-GRD	DECAL	1
6	GRD-126AS	TEAR DROP BRACKET	1
7	SR-C08	SNAP RING	2
8	HHS0616020	3/8" X 1 1/4" BOLT	1
9	HTN0616	3/8" LOCK NUT	1
10	AHS0616006	3/8" X 3/8" ALLEN HEAD SET SCREW	3

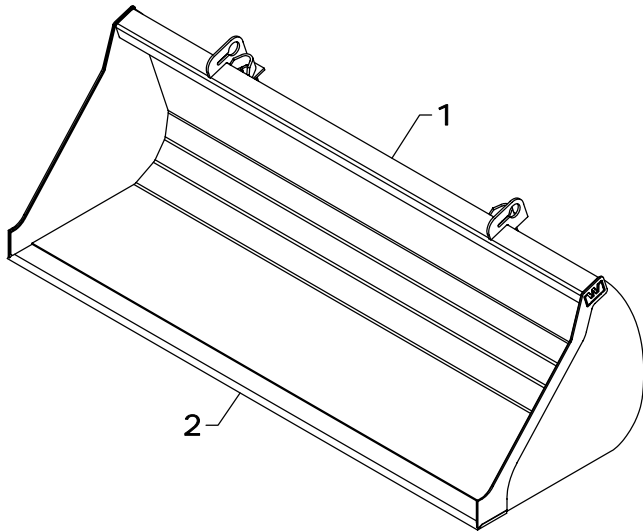
*NOTE: *Order LAC-15-11 when ordering a complete Rotational Bucket Indicator Kit.*

OPTIONAL ROTATIONAL HEIGHT INDICATOR



LAC-25-01			
REF #	PART #	DESCRIPTION	QTY
1	GRD-11AS	HEIGHT INDICATOR	1
2	GRD-2AS	POINTER	1
3	DE-GRD	DECAL	1
4	BUS-105	BUSHING	1
5	BUS-106	BUSHING	1
6	BUS-107	INSERT BUSHING	1
7	LM-4	NYLON BUSHING	1
8	XAF-154	PIN	1
9	ZER1805	GREASE FITTING	1
10	SHS0616008	3/8" X 1/2" SQUARE HEAD SET SCREW	1
11	AHS0616006	3/8" X 3/8" ALLEN HEAD SET SCREW	1
12	RLP0700036	7/16" ROLL PIN	1
13	HHS0616056	3/8" X 3 1/2" BOLT	1
14	CBF0616024	3/8" X 1 1/2" CARRIAGE BOLT	1
15	HTN0616	3/8" LOCK NUT	1

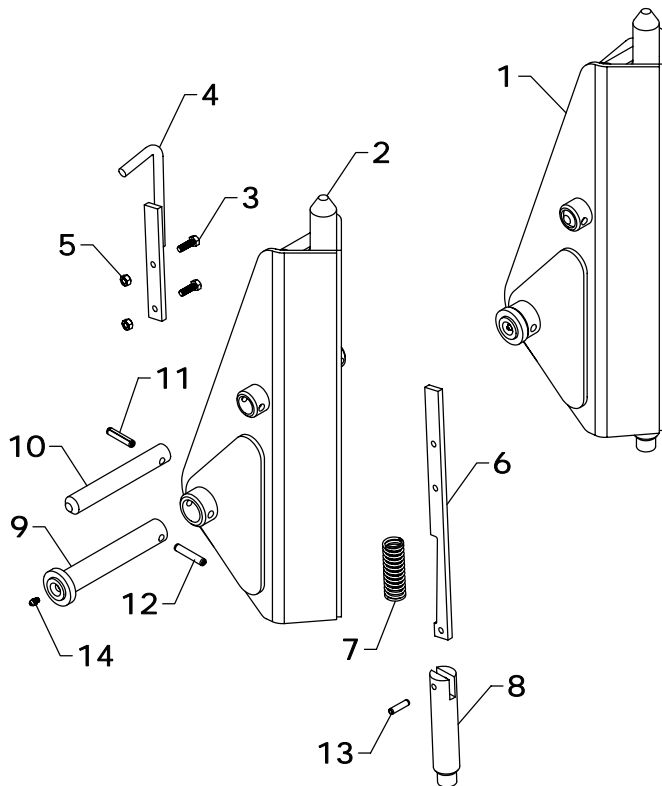
*NOTE: *Order LAC-25-01 when ordering a complete Rotational Height Indicator Kit.*



BUCKET

REF #	PART #	DESCRIPTION	QTY.
1	96Q730	96" BUCKET	*
	108Q733	108" BUCKET	*
2	CB-14	96" BLADE	*
	UB-414	108" BLADE	*

NOTE: *Check width of the bucket and use the part number that matches. If your size is not shown, contact Westendorf Mfg. Co.
NOTE: 108Q733 is not a tapered bucket.



SNAP-ATTACH™ COUPLER (C-4B)

REF #	PART #	DESCRIPTION	QTY.
1	QC-1201COM	SNAP ATTACH	1
2	QC-1201AS	MALE COUPLER	1
3	HHS0518016	5/16" X 1" BOLT	2
4	QC-6AS	LATCH HANDLE	1
5	HTN0518	5/16" LOCK NUT	2
6	QC-8	LATCH	1
7	QC-12	SPRING	1
8	QC-3	BOTTOM LATCH PIN	1
9	XAF-55AS	LINKAGE PIN	1
10	LF-51	LINKAGE PIN	1
11	DRP0600028	DOUBLE ROLL PIN	1
12	DRP0600032	DOUBLE ROLL PIN	1
13	RLP0500020	5/16" X 1 1/4" ROLL PIN	1
14	ZER1805	GREASE FITTING	1

NOTE: Qty. shows number of parts received if ordered using listed part numbers.
 C-4B is two (QC-1201COM) couplers.

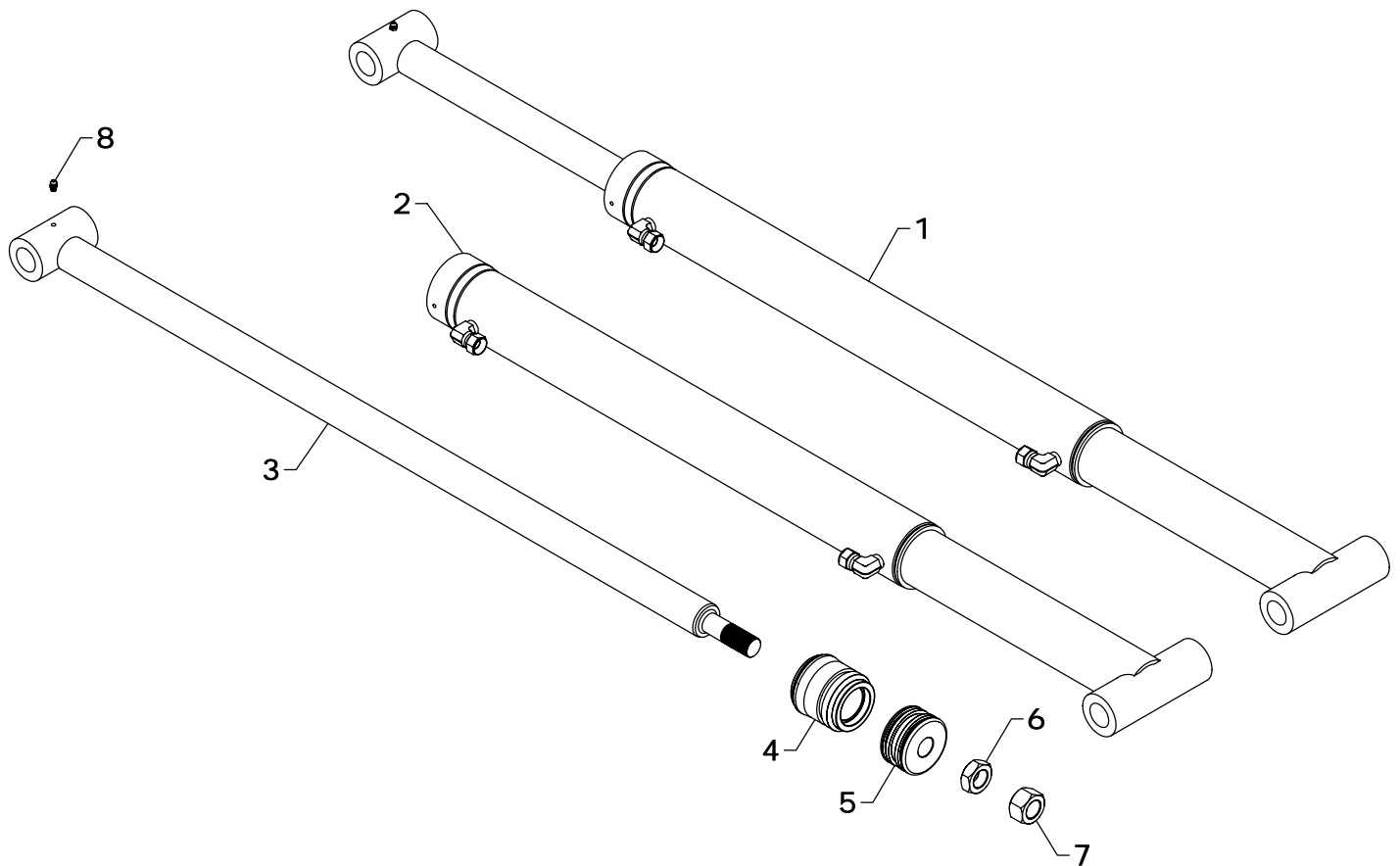
COSMETICS

REF #	PART #	DESCRIPTION	QTY.
1	DEC-700B	DECAL KIT	1
2	V-9524-A	BLACK SPRAY PAINT	1
	V-48782-A	ELECTRIC ICE SPRAY PAINT	1
3	V-48782-P	PINT ELECTRIC ICE PAINT	1
	V-9524-P	PINT BLACK PAINT	1

REF #	PART #	DESCRIPTION	QTY.
4	V-48782-Q	QUART ELECTRIC ICE PAINT	1
	V-9524-Q	QUART BLACK PAINT	1
5	V-48782-G	GALLON ELECTRIC ICE PAINT	1
	V-9524-G	GALLON BLACK PAINT	1

NOTE: Warning decals are available at no charge. If they become damaged or missing, order part numbers DE-SS1, DE-WLD4-A, DE-WLD5-A, DE-LD1, DE-PP, and DE-QCC.

WESTENDORFMFG PWB212050



STEPS TO REPAIR CYLINDER

- 1) At the ram end of the cylinder barrel, remove the spiral retaining ring from the top of the gland.
NOTE: The G-E gland does not use the spiral retaining ring.
- 2) Gently drive the gland into the barrel using a brass or non-marring punch until the round retaining ring is visible.
- 3) Remove the round retaining ring using a pair of long nose pliers. Remove the ram assembly (ram, gland, and piston) from the barrel.
- 4) Notice the direction they're pointing so they can be properly re-assembled.
- 5) Remove the jam nut and/or hex nut from the end of the ram.
- 6) Remove the old seals and rings and replace them with the new seals and rings. (Seal kits are packaged for several different cylinders. You may have extra parts)
- 7) Clean cylinder with cleaner and a clean lint free cloth.
- 8) Lubricate the seals and rings to aid assembly.
- 9) Assemble the cylinder by reversing the order.

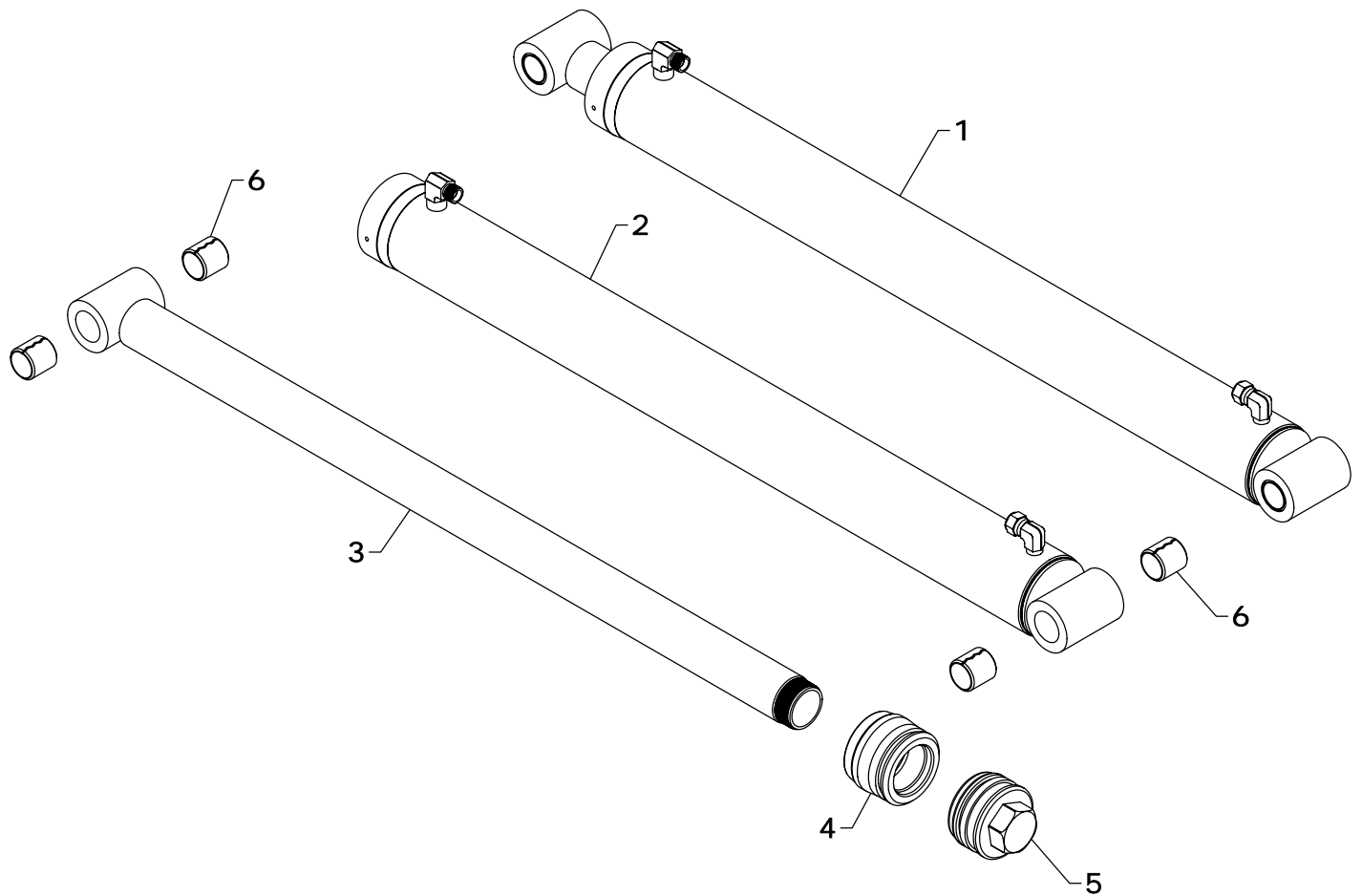
CYLINDER REPAIR TIPS

- When disassembling cylinders, keep the parts in correct orientation. Remove parts in sequence.
- Note the direction of the piston and gland. Lay out old seals and parts as they are removed.
- Assemble cylinder in proper order; lubricate to aid assembly.

BUCKET CYLINDER REPLACEMENT PARTS

REF #	PART #	DESCRIPTION	QTY.
1	B-53	BUCKET CYLINDER	1
2	B-5301	BARREL	1
3	B-5310	RAM	1
4	G-W	GLAND	1
5	P-B	PISTON	1
6	HJN1614	1" JAM NUT	1
7	HFN1614	1" NUT	1
8	ZER1805	GREASE FITTING	1
9	#35CK	SEAL KIT	*

NOTE: * Seal kit contains parts to repair one cylinder



STEPS TO REPAIR CYLINDER

- 1) Extend the ram out as far as possible.
- 2) At the ram end of the cylinder barrel you will find a snap ring located either on the face of the gland or inside the notch of the gland.
- 3) Locate the snap ring eyes (you may need to turn the gland inside the barrel to find the snap ring eyes). Compress the snap ring with snap ring pliers.
- 4) Remove the ram assembly (ram, gland, & piston) from barrel.
- 5) Notice the direction they are pointing so they can be properly re-assembled.
- 6) Remove the piston and gland from the ram.
- 7) Remove the old seals and rings and replace them with the new seals and rings. (Seal kits are packaged for several different cylinders. You may have extra parts)
- 8) Clean the cylinder with cleaner and a clean lint free cloth.
- 9) Lubricate the seals and rings to aid assembly.
- 10) Assemble the cylinder by reversing the order.

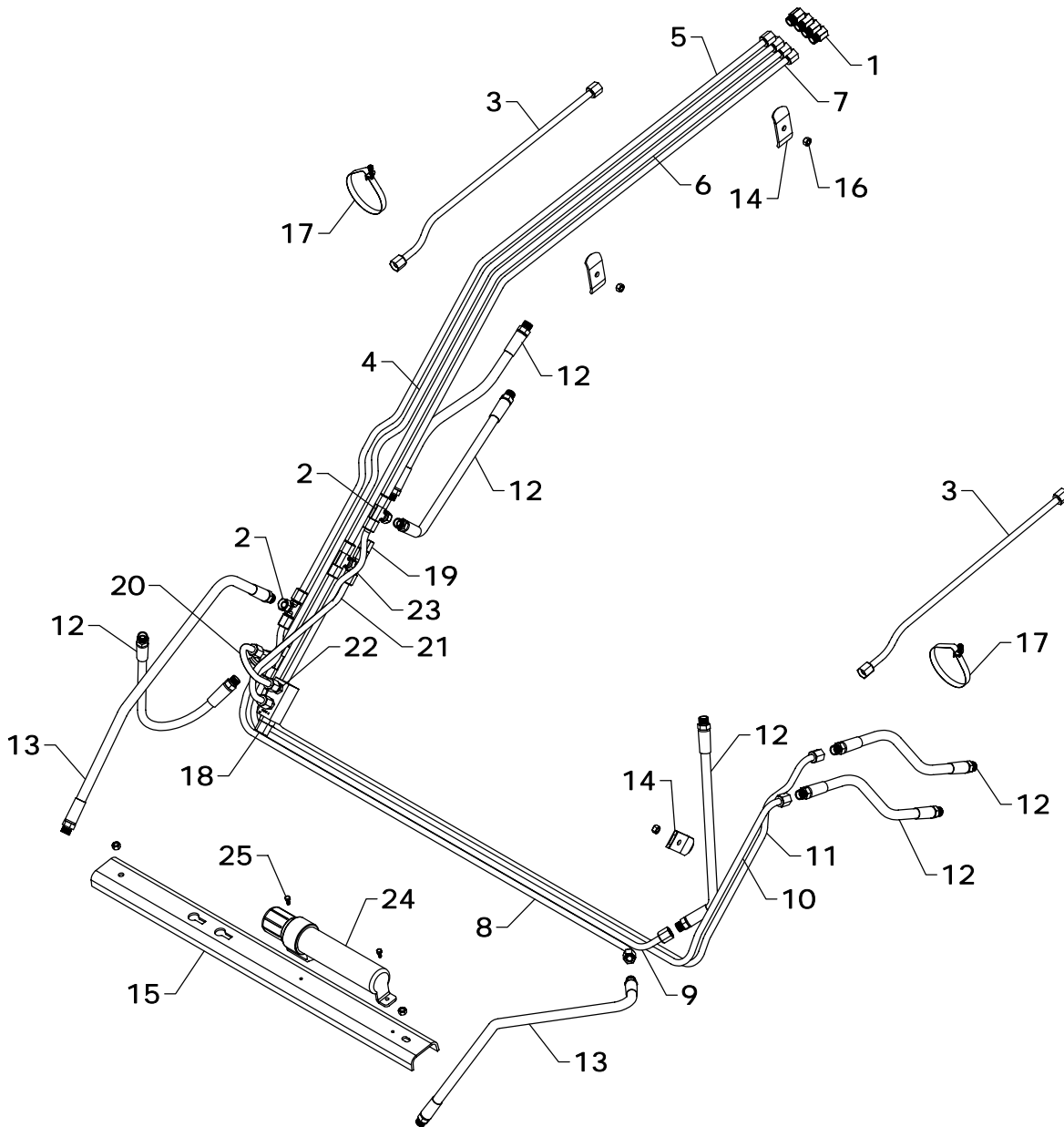
CYLINDER REPAIR TIPS

- When disassembling cylinders, keep the parts in correct orientation. Remove parts in sequence.
- Note the direction of the piston and gland. Lay out old seals and parts as they are removed.
- Assemble cylinder in proper order; lubricate to aid assembly.

LIFT CYLINDER REPLACEMENT PARTS

REF #	PART #	DESCRIPTION	QTY.
1	L-64	LIFT CYLINDER	1
2	L-6401	BARREL	1
3	L-6410	RAM	1
4	G-U	GLAND	1
5	P-Z	PISTON	1
6	LW-32	INSERT BUSHING	4
7	#53CK	SEAL KIT	*

*NOTE: * Seal kit contains parts to repair one cylinder*



XTA-700B HYDRAULICS

REF #	PART #	DESCRIPTION	QTY.
1	PF-FFC8	FEMALE CONNECTOR	4
2	PF-FSBT8	SWIVEL NUT TEE	5
3	OLT-1	OIL LINE	2
4	OLT-645	OIL LINE	1
5	OLT-646	OIL LINE	1
6	OLT-647	OIL LINE	1
7	OLT-648	OIL LINE	1
8	OLT-649	OIL LINE	1
9	OLT-650	OIL LINE	1
10	OLT-651	OIL LINE	1
11	OLT-652	OIL LINE	1
12	H06020-FF	3/8" X 20" HOSE	6
13	H06040-FF	3/8" X 40" HOSE	2

REF #	PART #	DESCRIPTION	QTY.
14	OH-3	OIL LINE HOLDER	3
15	OH-1	OIL LINE PROTECTOR	1
16	HTN0616	3/8" LOCK NUT	5
17	BAND-15	METAL BAND	2
18	SLV-2A	RELIEF VALVE	1
19	OLT-213	OIL LINE	1
20	OLT-654	OIL LINE	1
21	OLT-655	OIL LINE	1
22	PF-FMC0608	MALE CONNECTOR	2
23	PF-8-JU-S	TEE	1
24	GP-2	MANUAL CANISTER	1
25	EC-M03	SELF TAPPING SCREW	2

WESTENDORFMFG PWB212050

WESTENDORF MFG. CO., INC. • PH: (712) 423-2762 • FAX: (712) 423-1460 • sales@westendorfmfg.com • www.loaders.com