

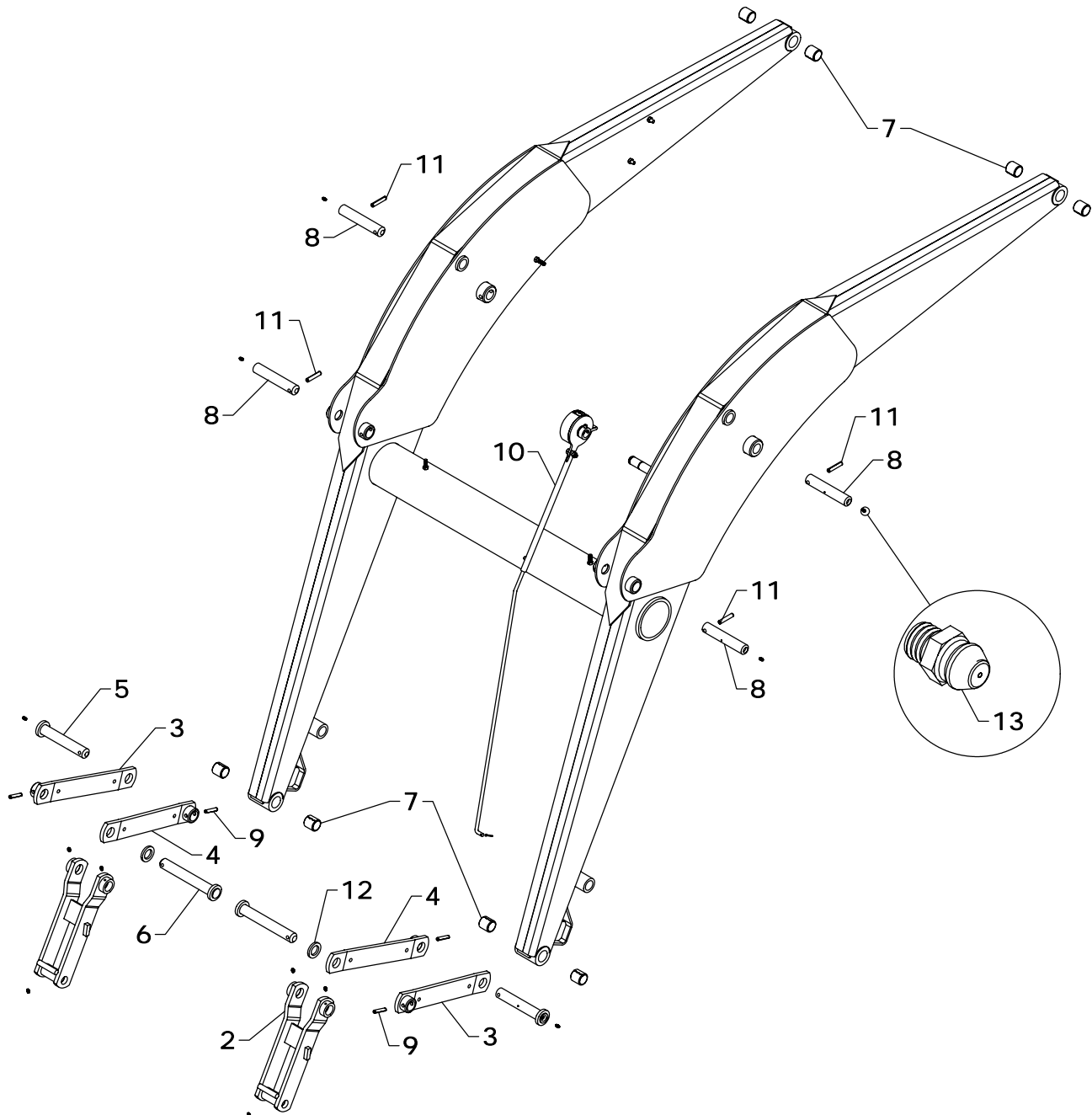
## BASIC LOADER TOWER REPLACEMENT PARTS

REF #	PART #	DESCRIPTION	QTY.
1	XBT-12AS	TOWER	1
2	XAT-25AS	LATCH	2
3	XBT-70AS	STAND TUBE	2
4	XBT-73	CLAMP WASHER	2
5	XAF-54	LINKAGE PIN	4

REF #	PART #	DESCRIPTION	QTY.
6	HHS0813016	1/2" X 1" BOLT	2
7	HHS1011040	5/8" X 2 1/2" BOLT	2
8	HTN1011	5/8" LOCK NUT	2
9	RLP0700036	7/16" ROLL PIN	4
10	ZER1805	GREASE FITTING	4

WESTENDORFMFG PWB018030

WESTENDORF MFG CO., INC. • PH: (712) 423-2762 • FAX: (712) 423-1460 • sales@westendorfmfg.com • www.loaders.com



## BASIC LOADER FRAME REPLACEMENT PARTS

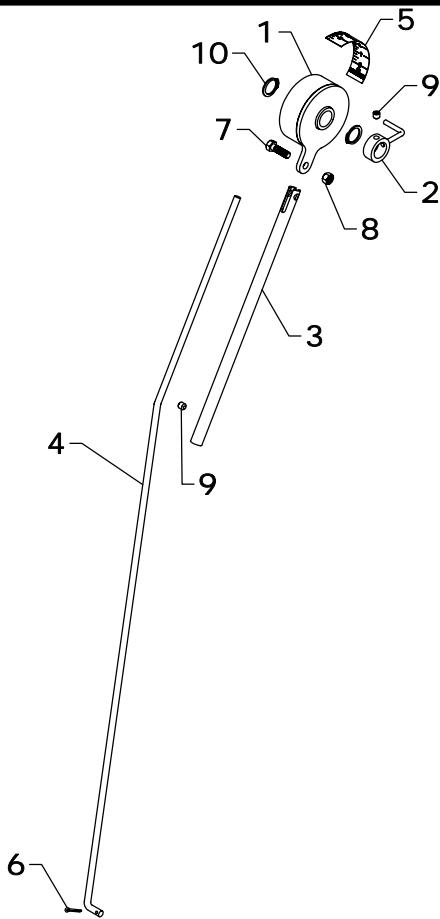
REF #	PART #	DESCRIPTION	QTY.
1	XBF-4AS	FRAME	1
2	NAF-15AS	LINKAGE CONNECTOR	2
3	XBF-10AS	OUTSIDE BUCKET LINKAGE	2
4	XBF-11AS	INSIDE BUCKET LINKAGE	2
5	XAF-55AS	LINKAGE PIN	2
6	LMF-125AS	ROUND HEAD PIN	2
7	LW-32	INSERT BUSHING	8

REF #	PART #	DESCRIPTION	QTY.
8	XAF-54	LINKAGE PIN	4
9	DRP0600032	DOUBLE ROLL PIN	4
10	LAC-15-16	ROTATIONAL BUCKET INDICATOR	1
11	RLP0700036	7/16" ROLL PIN	4
12	NAF-117	PIN HEAD	2
13	ZER1805	GREASE FITTING	12

*NOTE: See next page for LAC-15-16 & Optional Height Indicator parts breakdown.*

WESTENDORFMFG PWB018030

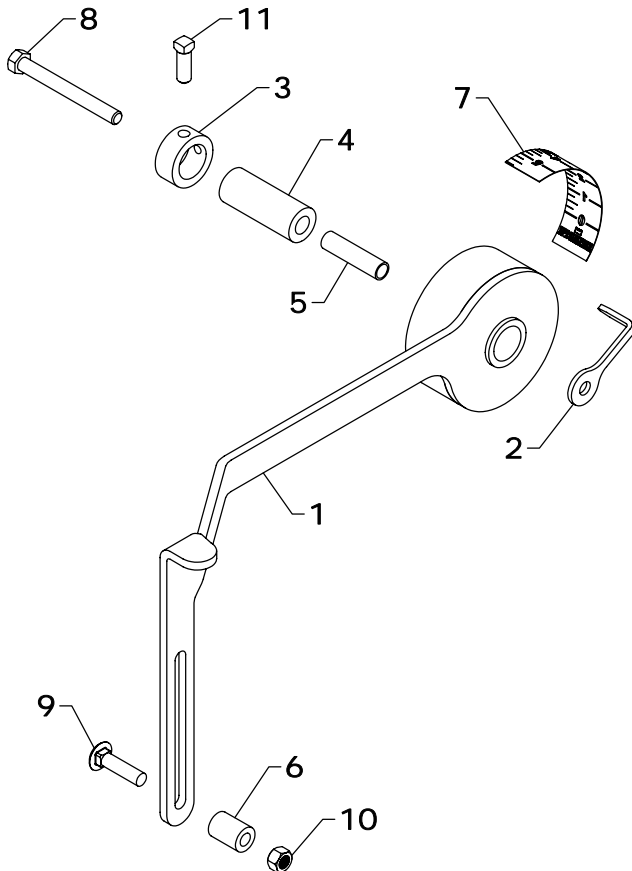
WESTENDORF MFG. CO., INC. • PH:(712) 423-2762 • FAX: (712) 423-1460 • sales@westendormfg.com • www.loaders.com



### ROTATIONAL BUCKET INDICATOR

LAC-15-16			
REF #	PART #	DESCRIPTION	QTY
1	GRD-101AS	BUCKET INDICATOR	1
2	GRD-2AS	POINTER	1
3	GRD-105	GAUGE ROD HOLDER	1
4	GRD-140	GAUGE ROD	1
5	DE-GRD	5" RULER	1
6	CTK0200016	1/8" X 1" COTTER KEY	1
7	HHS0616020	3/8" X 1 1/4" BOLT	1
8	HTN0616	3/8" LOCK NUT	1
9	AHS0616006	3/8" X 3/8" ALLEN HEAD SET SCREW	2
10	SR-C08	SNAP RING	2

*NOTE: \*Order LAC-15-16 when ordering a complete Rotational Bucket Indicator Kit.*

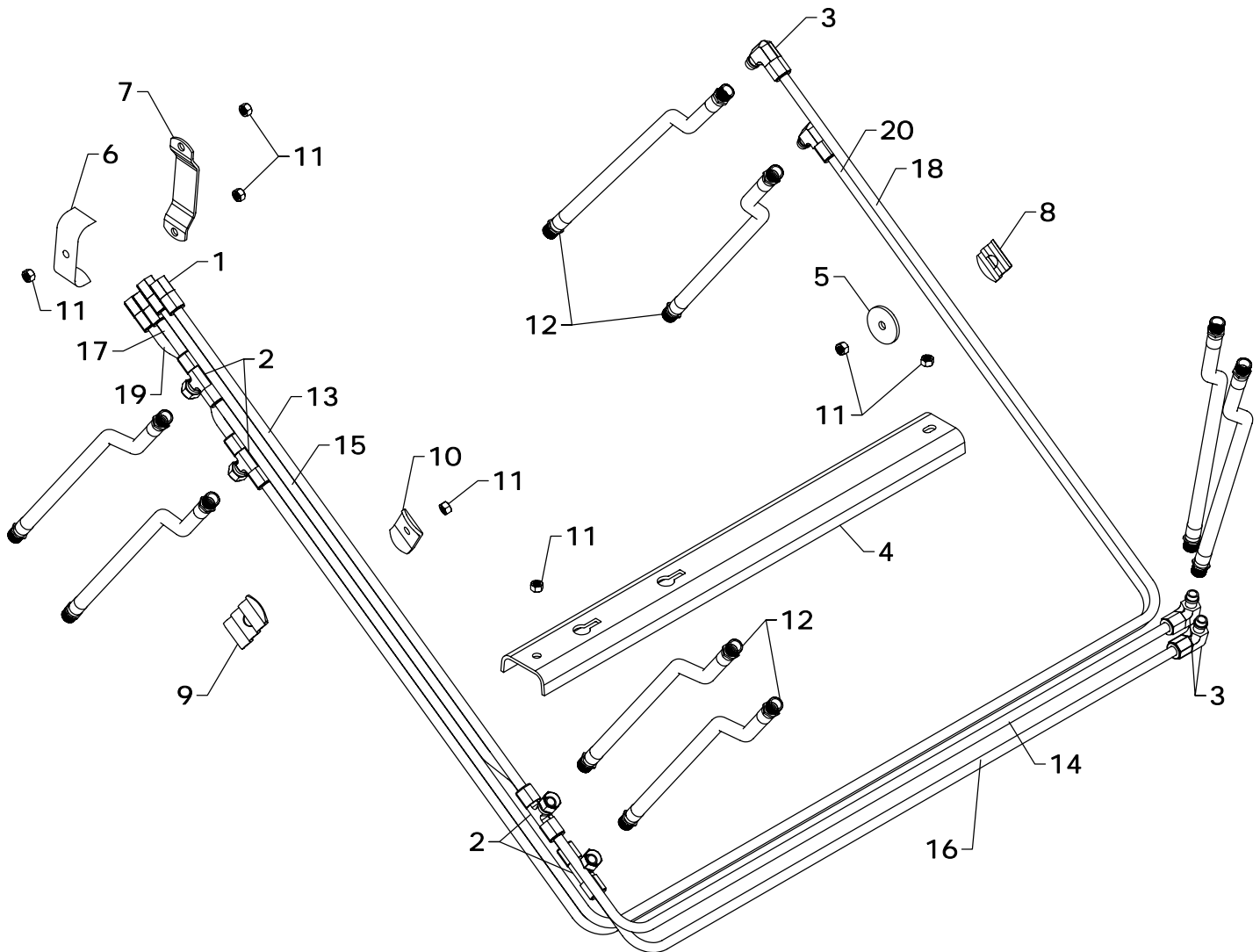


### ROTATIONAL HEIGHT INDICATOR

LAC-25-02			
REF #	PART #	DESCRIPTION	QTY.
1	GRD-21AS	HEIGHT INDICATOR	1
2	GRD-123	POINTER	1
3	BUS-105	BUSHING	1
4	BUS-106	BUSHING	1
5	BUS-107	INSERT BUSHING	1
6	LM-4	NYLON BUSHING	1
7	DE-GRD	5" RULER	1
8	HHS0616056	3/8" X 3 1/2" BOLT	1
9	CBF0616024	3/8" X 1 1/2" CARRIAGE BOLT	1
10	HTN0616	3/8" LOCK NUT	1
11	SHS0616016	3/8" X 1" SET SCREW	1

*NOTE: \*Order LAC-25-02 when ordering a complete Rotational Height Indicator Kit.*

*NOTE: The Rotational Height Indicator is optional for the XTA-400.*



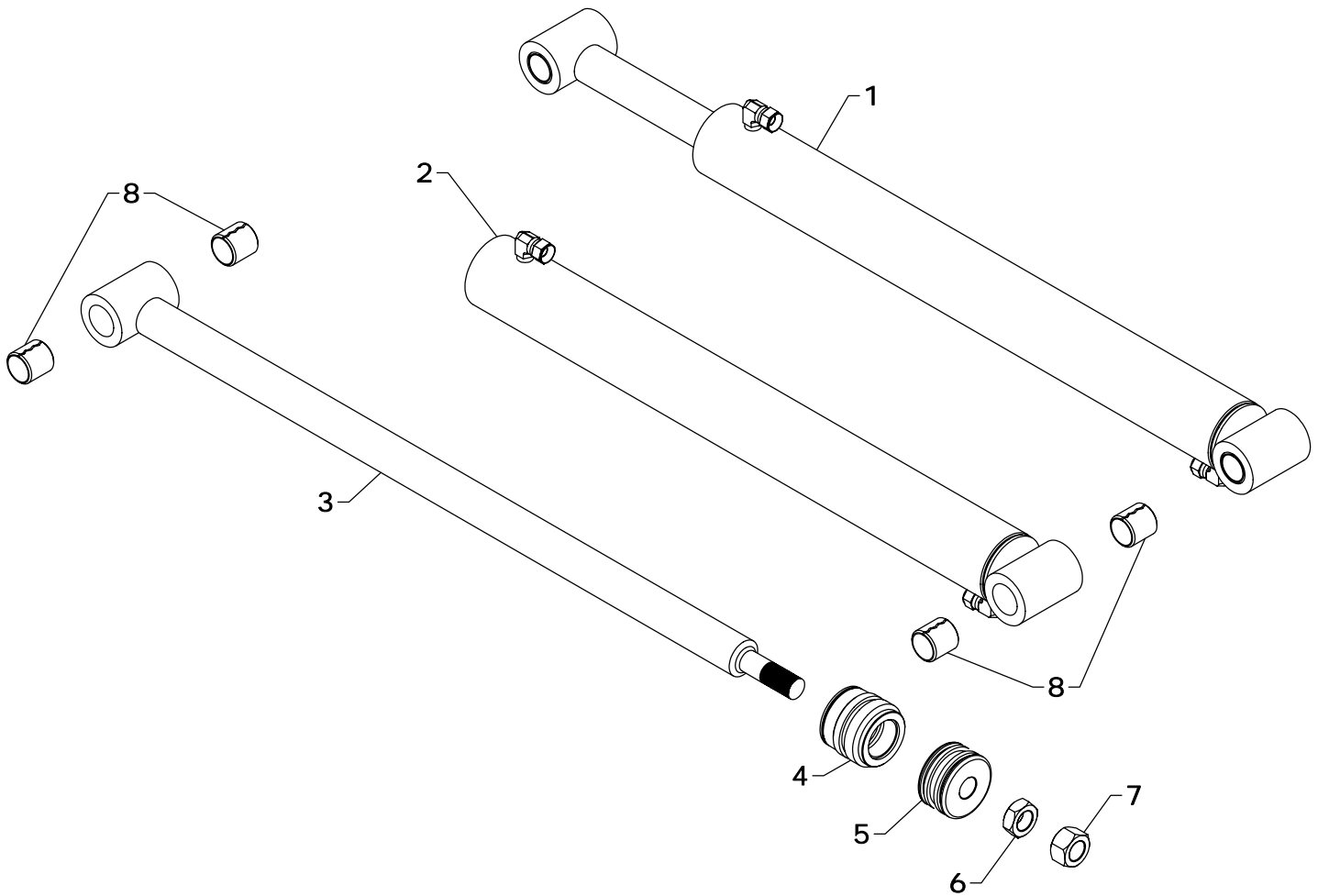
## HYDRAULIC LINES

REF #	PART #	DESCRIPTION	QTY.
1	PF-FFC8	FEMALE CONNECTOR	4
2	PF-FSBT8	SWIVEL TEE	4
3	PF-FSE8	SWIVEL ELBOW	4
4	OH-2	OIL LINE PROTECTOR	1
5	OH-16	OIL LINE HOLDER	1
6	OH-19	HOSE HOLDER	1
7	OH-17	HOSE HOLDER	1
8	OH-13	OIL LINE HOLDER	1
9	OH-14	OIL LINE HOLDER	1
10	OH-3	OIL LINE HOLDER	1

REF #	PART #	DESCRIPTION	QTY.
11	HTN0616	3/8" LOCK NUT	7
12	H06020-FF	3/8" X 20" HOSE	8
13	OLT-400	OIL LINE	1
14	OLT-401	OIL LINE	1
15	OLT-402	OIL LINE	1
16	OLT-403	OIL LINE	1
17	OLT-404	OIL LINE	1
18	OLT-405	OIL LINE	1
19	OLT-406	OIL LINE	1
20	OLT-407	OIL LINE	1

WESTENDORFMFG PWB018030

WESTENDORF MFG. CO., INC. • PH: (712) 423-2762 • FAX: (712) 423-1460 • sales@westendorfmfg.com • www.loaders.com



### STEPS TO REPAIR CYLINDER

- 1) At the ram end of the cylinder barrel, remove the spiral retaining ring from the top of the gland.  
**NOTE:** The G-E gland does not use the spiral retaining ring.
- 2) Gently drive the gland into the barrel using a brass or non-marring punch until the round retaining ring is visible.
- 3) Remove the round retaining ring using a pair of long nose pliers. Remove the ram assembly (ram, gland, and piston) from the barrel.
- 4) Notice the direction they're pointing so they can be properly re-assembled.
- 5) Remove the jam nut and/or hex nut from the end of the ram.
- 6) Remove the old seals and rings and replace them with the new seals and rings. (Seal kits are packaged for several different cylinders. You may have extra parts)
- 7) Clean cylinder with cleaner and a clean lint free cloth.
- 8) Lubricate the seals and rings to aid assembly.
- 9) Assemble the cylinder by reversing the order.

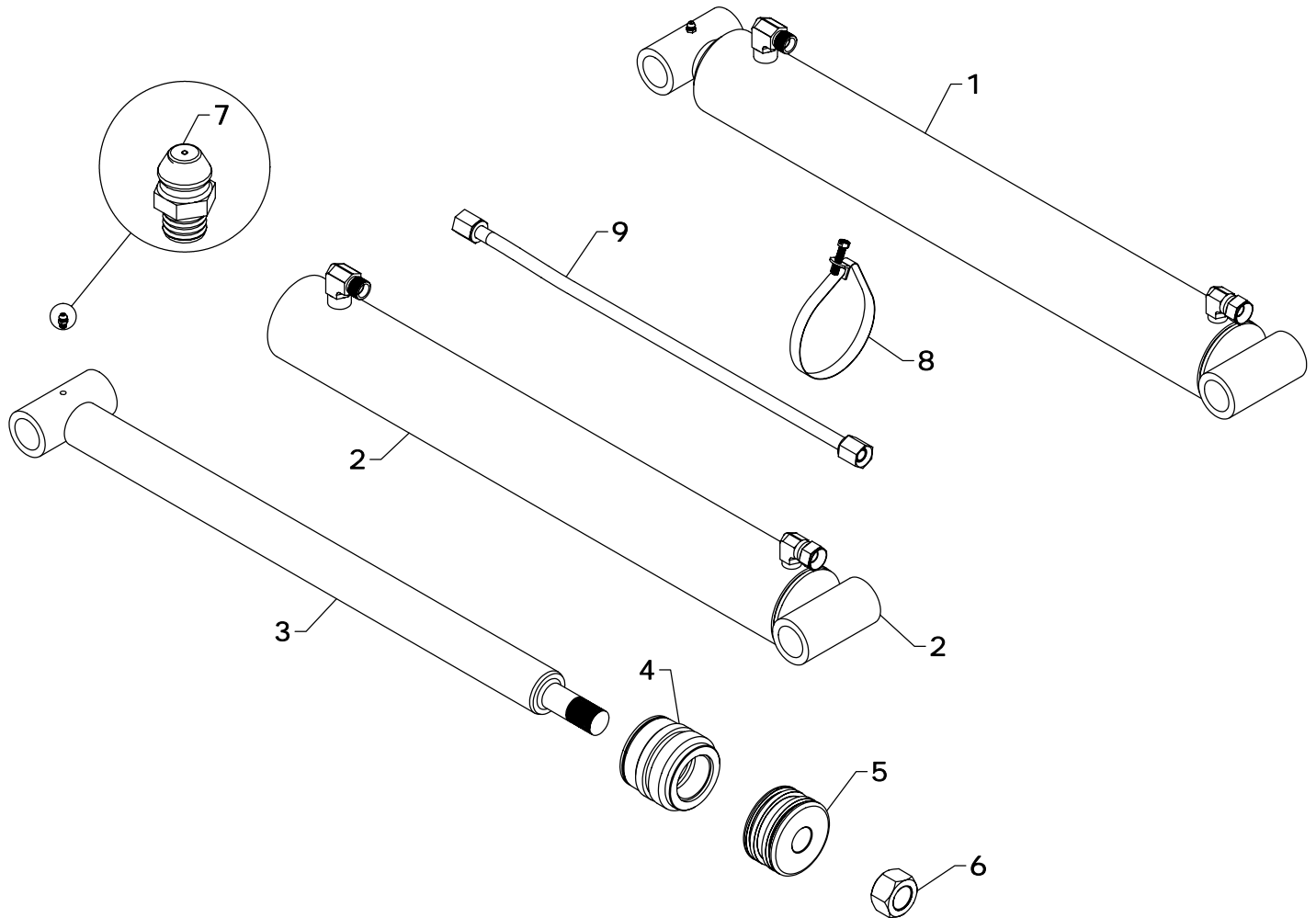
### CYLINDER REPAIR TIPS

- When disassembling cylinders, keep the parts in correct orientation. Remove parts in sequence.
- Note the direction of the piston and gland. Lay out old seals and parts as they are removed.
- Assemble cylinder in proper order; lubricate to aid assembly.

## LIFT CYLINDER REPLACEMENT PARTS

REF #	PART #	DESCRIPTION	QTY.
1	L-33	LIFT CYLINDER	1
2	L-3301	BARREL	1
3	L-3310	RAM	1
4	G-L	GLAND	1
5	P-B	PISTON	1
6	HJN1614	1" JAM NUT	1
7	HFN1614	1" NUT	1
8	LW-32	INSERT BUSHING	4
9	#4CK	REPAIR KIT *	1

**NOTE:** \* Repair kit contains parts to repair one cylinder



## STEPS TO REPAIR CYLINDER

- 1) At the ram end of the cylinder barrel, remove the spiral retaining ring from the top of the gland.  
**NOTE:** The G-E gland does not use the spiral retaining ring.
- 2) Gently drive the gland into the barrel using a brass or non-marring punch until the round retaining ring is visible.
- 3) Remove the round retaining ring using a pair of long nose pliers. Remove the ram assembly (ram, gland, and piston) from the barrel.
- 4) Notice the direction they're pointing so they can be properly re-assembled.
- 5) Remove the jam nut and/or hex nut from the end of the ram.
- 6) Remove the old seals and rings and replace them with the new seals and rings. (Seal kits are packaged for several different cylinders. You may have extra parts)
- 7) Clean cylinder with cleaner and a clean lint free cloth.
- 8) Lubricate the seals and rings to aid assembly.
- 9) Assemble the cylinder by reversing the order.

## CYLINDER REPAIR TIPS

- When disassembling cylinders, keep the parts in correct orientation. Remove parts in sequence.
- Note the direction of the piston and gland. Lay out old seals and parts as they are removed.
- Assemble cylinder in proper order; lubricate to aid assembly.

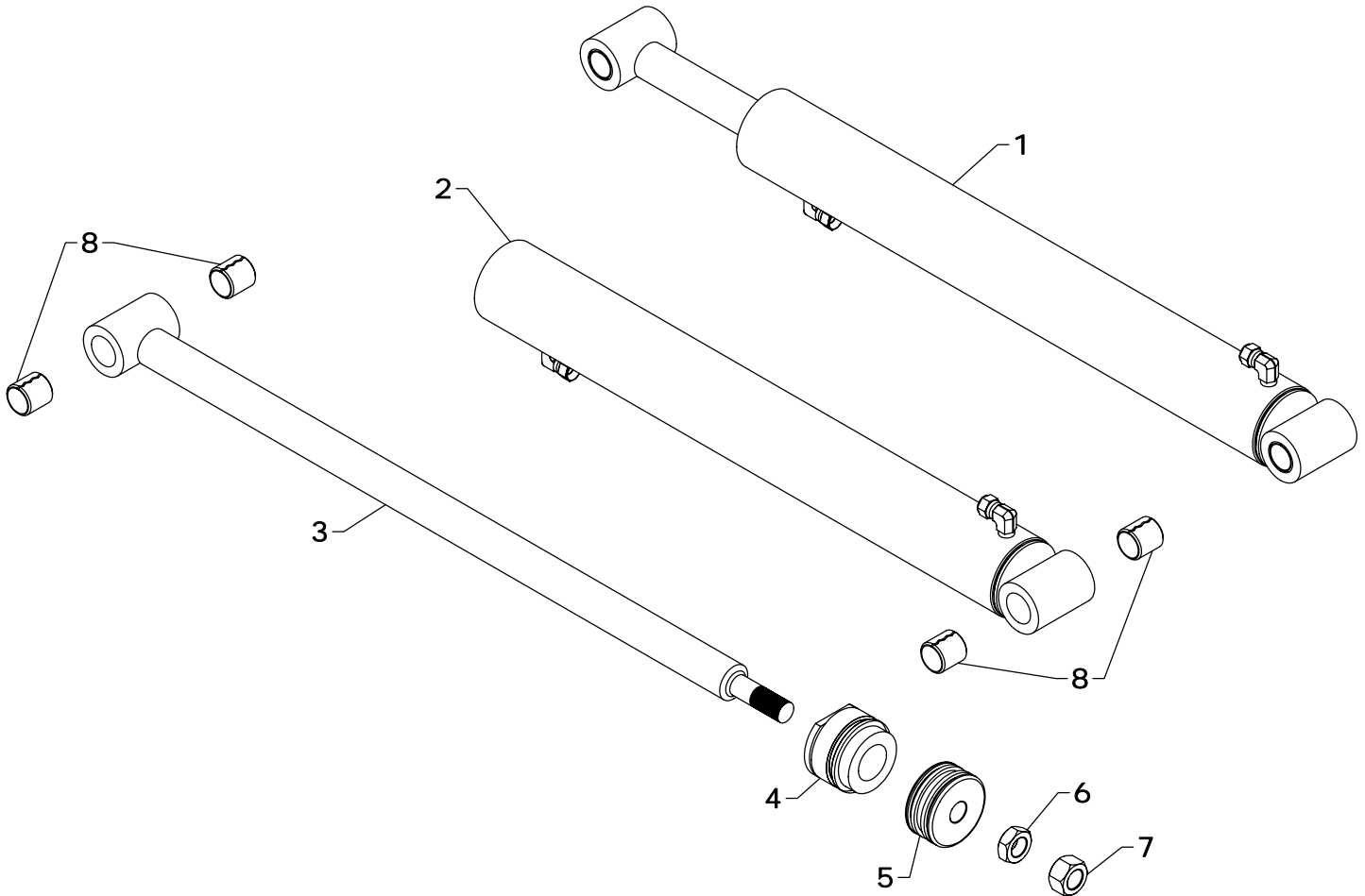
## BUCKET CYLINDER REPLACEMENT PARTS

REF #	PART #	DESCRIPTION	QTY.
1	B-34	BUCKET CYLINDER	1
2	B-3401	BARREL	1
3	B-2410	RAM	1
4	G-L	GLAND	1
5	P-B	PISTON	1
6	HFN1614	1" NUT	1
7	ZER1805	GREASE FITTING	1
8	BAND-15	METAL BAND	1
9	OLT-143	OIL LINE	1
10	#4CK	REPAIR KIT *	1

*NOTE: \* Repair kit contains parts to repair one cylinder*

WESTENDORFMFG PWB018030

WESTENDORF MFG. CO., INC. • PH: (712) 423-2762 • FAX: (712) 423-1460 • sales@westendorfmfg.com • www.loaders.com



### STEPS TO REPAIR CYLINDER

- 1) At the ram end of the cylinder barrel, remove the spiral retaining ring from the top of the gland.  
**NOTE:** The G-E gland does not use the spiral retaining ring.
- 2) Gently drive the gland into the barrel using a brass or non-marring punch until the round retaining ring is visible.
- 3) Remove the round retaining ring using a pair of long nose pliers. Remove the ram assembly (ram, gland, and piston) from the barrel.
- 4) Notice the direction they're pointing so they can be properly re-assembled.
- 5) Remove the jam nut and/or hex nut from the end of the ram.
- 6) Remove the old seals and rings and replace them with the new seals and rings. (Seal kits are packaged for several different cylinders. You may have extra parts)
- 7) Clean cylinder with cleaner and a clean lint free cloth.
- 8) Lubricate the seals and rings to aid assembly.
- 9) Assemble the cylinder by reversing the order.

### CYLINDER REPAIR TIPS

- When disassembling cylinders, keep the parts in correct orientation. Remove parts in sequence.
- Note the direction of the piston and gland. Lay out old seals and parts as they are removed.
- Assemble cylinder in proper order; lubricate to aid assembly.

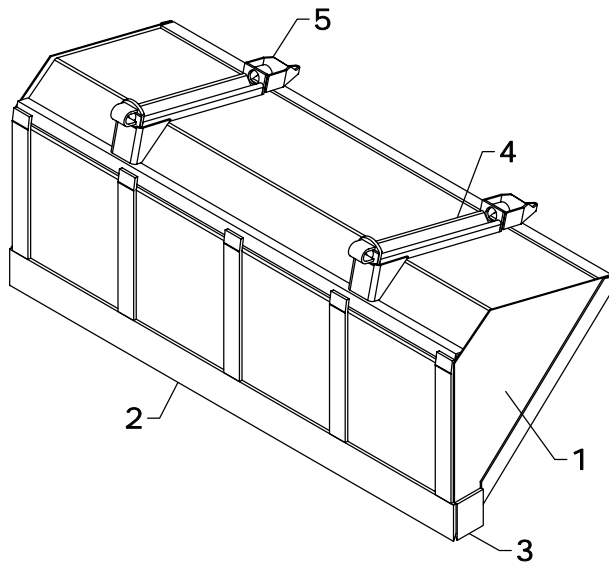
### OPTIONAL LIFT CYLINDER REPLACEMENT PARTS

REF #	PART #	DESCRIPTION	QTY.
1	H-33	LIFT CYLINDER	1
2	H-3301	BARREL	1
3	L-3310	RAM	1
4	G-P	GLAND	1
5	P-I	PISTION	1
6	HJN1614	1" JAM NUT	1
7	HFN1614	1" NUT	1
8	LW-32	INSERT BUSHING	4
9	#33CK	REPAIR KIT *	1

**NOTE:** \* Repair kit contains parts to repair one cylinder

WESTENDORFMFG PWB018030

WESTENDORF MFG. CO., INC. • PH: (712) 423-2762 • FAX: (712) 423-1460 • sales@westendormfg.com • www.loaders.com

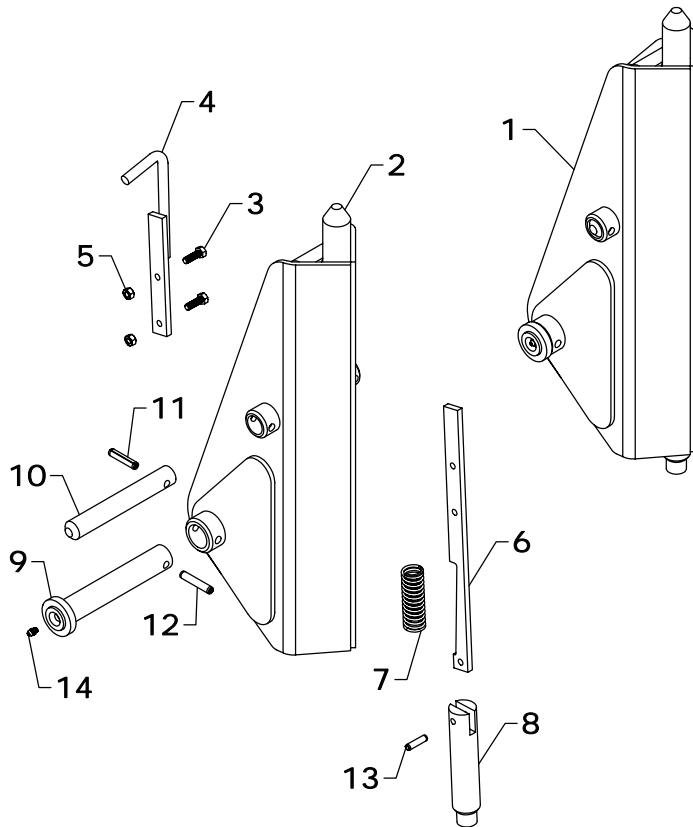


## BUCKET

REF #	PART #	DESCRIPTION	QTY.
1	84Q425	84" BUCKET	1
	90Q425	90" BUCKET	1
	96Q429	96" BUCKET	1
2	SB-14	84" BLADE	1
	LB-14	90" BLADE	1
	CB-14	96" BLADE	1
3	SB-15	SIDE BLADE	2
4	QC-13AS	WELD ON ADAPTER	2
5	JB-22	GUIDE (OPTIONAL)	2

*NOTE: \*Check width of the bucket and use the part number that matches. If your size is not shown, contact Westendorf Mfg. Co.*

## SNAP-ATTACH™ COUPLER (C-4B)



REF #	PART #	DESCRIPTION	QTY.
1	QC-1201COM	MALE COUPLER	1
2	QC-1201AS	MALE COUPLER	1
3	HHS0518016	5/16" X 1" BOLT	2
4	QC-6AS	LATCH HANDLE	1
5	HTN0518	5/16" LOCK NUT	2
6	QC-8	LATCH	1
7	QC-12	SPRING	1
8	QC-3	BOTTOM LATCH PIN	1
9	XAF-55AS	LINKAGE PIN	1
10	LF-51	LINKAGE PIN	1
11	DRP0600028	DOUBLE ROLL PIN	1
12	DRP0600032	DOUBLE ROLL PIN	1
13	RLP0500020	5/16" X 1 1/4" ROLL PIN	1
14	ZER1805	GREASE FITTING	1

*NOTE: Qty. shows the number of parts you will receive if you place an order using these part numbers. C-4B is two (QC-1201COM) couplers.*

## COSMETICS

REF #	PART #	DESCRIPTION	QTY.
1	DEC-400	DECAL KIT	1
2	V-5403-A	RED SPRAY PAINT	1
	V-9524-A	BLACK SPRAY PAINT	1

REF #	PART #	DESCRIPTION	QTY.
3	V-9524-P	PINT BLACK PAINT	1
4	V-9524-Q	QUART BLACK PAINT	1
5	V-9524-G	GALLON BLACK PAINT	1

*NOTE: Warning decals are available at no charge. If they become damaged or missing, order part numbers DE-CW.*

WESTENDORFMFG PWB018030