

## WL-42 LOADER REPLACEMENT PARTS

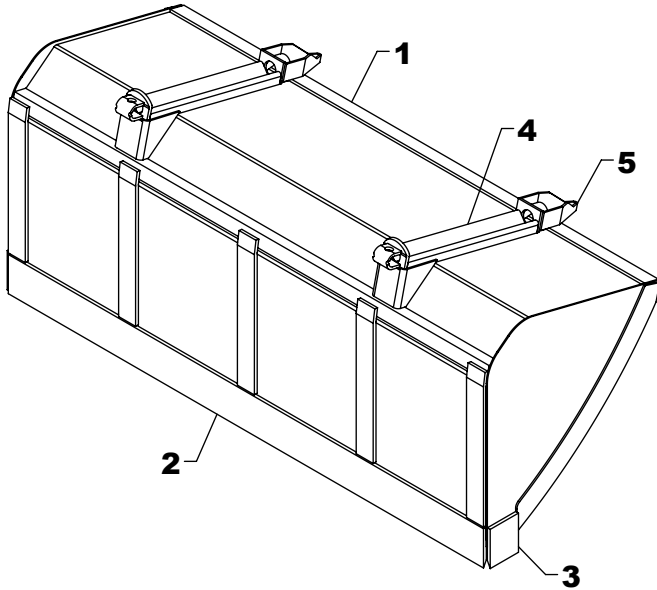
REF #	PART #	DESCRIPTION	QTY.
1	BT-1AS	TOWER (WL-42)	1
	BT-101AS	TOWER (WL-42A)	1
2	BT-18AS - R	FLIP LOCK (RIGHT)	1
3	BT-18AS - L	FLIP LOCK (LEFT)	1
4	BF-4AS	FRAME	1
5	BF-47AS	GAUGE ROD	1
6	BF-50AS	GAUGE ROD HOLDER	1
7	BF-59	PIN	1
8	BF-60	SPACER BUSHING	2

REF #	PART #	DESCRIPTION	QTY.
9	BF-61	GAUGE ROD SPACER	1
10	JT-20	PIN	4
11	LF-49	PIN	1
12	LF-82	LIFT PIN	2
13	HHS1011028	5/8" X 1 3/4" BOLT	2
14	DRP0600028	DOUBLE ROLL PIN	6
15	CTK0400032	1/4" X 2" COTTER KEY	4
16	ZER1805	GREASE FITTING	6
17	FMF-43AS	CAP	2

WESTENDORFMFG SJG311211

WESTENDORF MFG CO., INC. • PH: (712) 423-2762 • FAX: (712) 423-1460 • sales@westendorfmfg.com • www.loaders.com

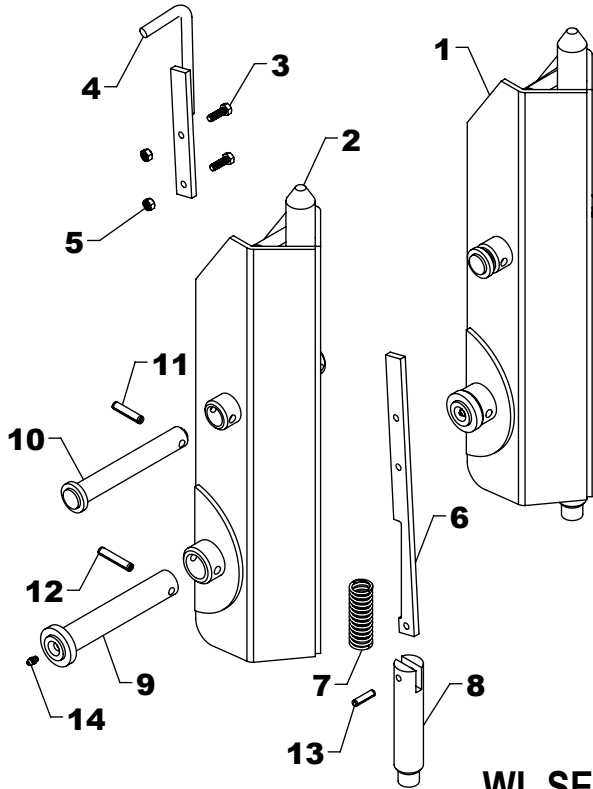
## WL-42 BUCKET



REF #	PART #	DESCRIPTION	QTY.
1	84Q425	84" BUCKET	1
	96Q429	96" BUCKET	1
2	SB-14	84" BLADE	1
	CB-14	96" BLADE	1
3	SB-15	BLADE	2
4	QC-13AS	WELD ON ADAPTER	2
5	JB-22	GUIDE (OPTIONAL)	2

**NOTE:** \*Check width of the bucket and use the part number that matches. If your size is not shown, contact Westendorf Mfg. Co.

## WL-27 / WL-42 SNAP-ATTACH™ COUPLER (C-5)



REF #	PART #	DESCRIPTION	QTY.
1	QC-501COM	MALE COUPLER COMPLETE	1
2	QC-501AS	MALE COUPLER	1
3	HHS0518016	5/16" X 1" BOLT	2
4	QC-6AS	LATCH HANDLE	1
5	HTN0518	5/16" LOCK NUT	2
6	QC-8	LATCH	1
7	QC-12	SPRING	1
8	QC-3	BOTTOM LATCH PIN	1
9	XAF-55AS	LINKAGE PIN	1
10	LMF-18AS	CYLINDER PIN	1
11	DRP0600028	DOUBLE ROLL PIN	1
12	DRP0600032	DOUBLE ROLL PIN	1
13	RLP0500020	5/16" X 1 1/4" ROLL PIN	1
14	ZER1805	GREASE FITTING	1

**NOTE:** Qty. shows number of parts received if ordered using listed part numbers.  
C-5 is two (QC-501COM) couplers.

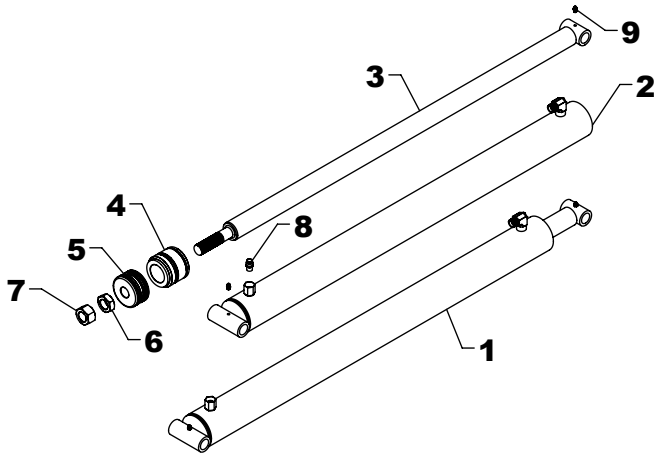
## WL SERIES COSMETICS

REF #	PART #	DESCRIPTION	QTY.
1	DEC-21	DECAL KIT (WL-21)	1
	DEC-27	DECAL KIT (WL-27)	1
	DEC-42	DECAL KIT (WL-42)	1
2	V-5403-A	RED SPRAY PAINT	1
	V-9524-A	BLACK SPRAY PAINT	1

REF #	PART #	DESCRIPTION	QTY.
3	V-5403-P	PINT RED PAINT	1
	V-9524-P	PINT BLACK PAINT	1
4	V-5403-Q	QUART RED PAINT	1
	V-9524-Q	QUART BLACK PAINT	1
5	V-5403-G	GALLON RED PAINT	1
	V-9524-G	GALLON BLACK PAINT	1

**NOTE:** Warning decals are available at no charge. If they become damaged or missing, order part numbers DE-WWS, DE-WWWS, DE-PP, DE-QCC.

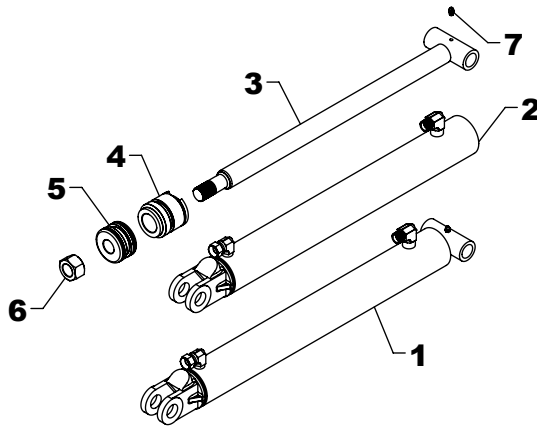
WESTENDORFMFG SJG311211



## WL-42 LIFT CYLINDER REPLACEMENT PARTS

REF #	PART #	DESCRIPTION	QTY.
1	L-10	LIFT CYLINDER	1
2	L-1001	BARREL	1
3	L-1010	RAM	1
4	G-B	GLAND	1
5	P-B	PISTON	1
6	HJN1614	1" JAM NUT	1
7	HFN1614	1" NUT	1
8	L-819AS	PORT	1
9	ZER1805	GREASE FITTING	2
10	#4CK	REPAIR KIT	*

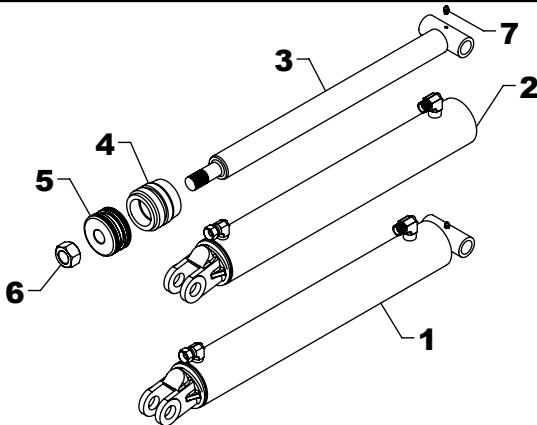
**NOTE:** \* Repair kit contains parts to repair one cylinder



## WL-21 / WL-27 / WL-42 BUCKET CYLINDER REPLACEMENT PARTS

REF #	PART #	DESCRIPTION	QTY.
1	B-1	CYLINDER	1
2	B-101	BARREL	1
3	B-110	RAM	1
4	G-A	GLAND	1
5	P-A	PISTON	1
6	HFN1614	1" NUT	1
7	ZER1805	GREASE FITTING	1
8	#1CK	REPAIR KIT	*

**NOTE:** \* Repair kit contains parts to repair one cylinder



## WL-42 OPTIONAL 3" BUCKET CYLINDER REPLACEMENT PARTS

REF #	PART #	DESCRIPTION	QTY.
1	B-4	BUCKET CYLINDER	1
2	B-401	BARREL	1
3	B-410	RAM	1
4	G-E	GLAND	1
5	P-B	PISTON	1
6	HFN1614	1" NUT	1
7	ZER1805	GREASE FITTING	1
8	#4CK	REPAIR KIT	*

**NOTE:** \* Repair kit contains parts to repair one cylinder

### STEPS TO REPAIR CYLINDER

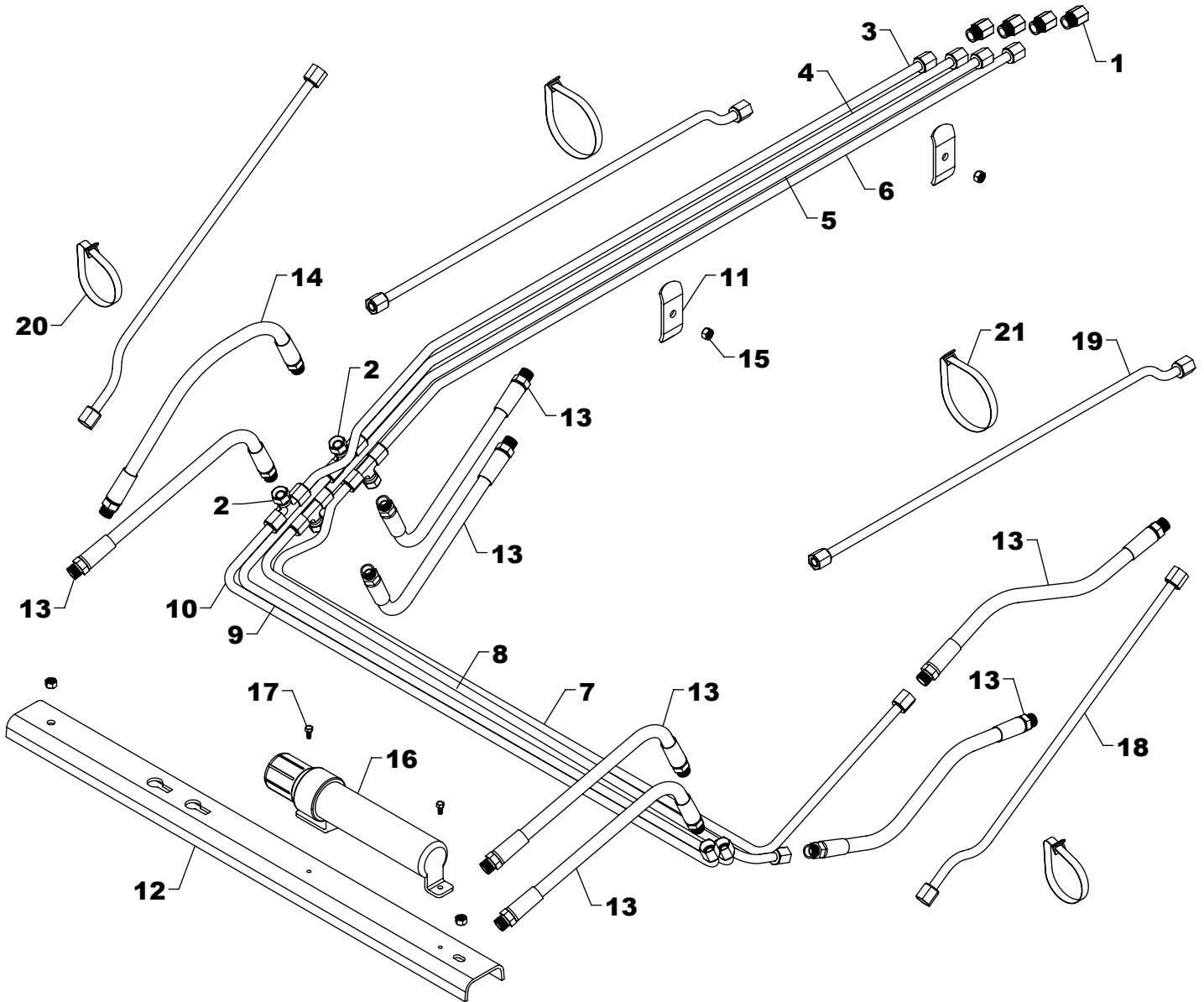
- 1) Extend the ram out as far as possible.
- 2) At the ram end of the cylinder barrel you will find a snap ring located either on the face or inside the notch of the gland.
- 3) Locate the snap ring eyes (you may need to turn the gland inside the barrel to find the snap ring eyes). Compress the snap ring with snap ring pliers.
- 4) Remove the ram assembly (ram, gland, & piston) from barrel.
- 5) Notice the direction they're pointing so they can be properly re-assembled.
- 6) Remove the jam nut and/or hex nut from the end of the ram.

- 7) Remove the old seals and rings and replace them with the new seals and rings. (Seal kits are packaged for several different cylinders. You may have extra parts)
- 8) Clean cylinder with cleaner and a clean lint free cloth.
- 9) Lubricate the seals and rings to aid assembly.
- 10) Assemble the cylinder by reversing the order.

### CYLINDER REPAIR TIPS

- When disassembling cylinders, keep the parts in correct orientation. Remove parts in sequence.
- Note the direction of the piston and gland. Lay out old seals and parts as they are removed.
- Assemble cylinder in proper order; lubricate to aid assembly.

WESTENDORFMFG SJG311211



## WL-42 HYDRAULICS

REF #	PART #	DESCRIPTION	QTY.
1	PF-FFC8	FEMALE CONNECTOR	4
2	PF-FSBT8	SWIVEL NUT TEE	4
3	OLT-32	OIL LINE	1
4	OLT-33	OIL LINE	1
5	OLT-34	OIL LINE	1
6	OLT-35	OIL LINE	1
7	OLT-36	OIL LINE	1
8	OLT-37	OIL LINE	1
9	OLT-38	OIL LINE	1
10	OLT-39	OIL LINE	1
11	OH-3	OIL LINE HOLDER	2

REF #	PART #	DESCRIPTION	QTY.
12	OH-1	OIL LINE PROTECTOR	1
13	H06020-FF	3/8" X 20" HOSE	7
14	H06030-FF	3/8" X 30" HOSE	1
15	HTN0616	3/8" LOCK NUT	4
16	GP-2	MANUAL CANISTER	1
17	EC-M03	SELF TAPPING SCREW	2
18	OLT-1	OIL LINE	2
19	OLT-2	OIL LINE	2
20	BAND-12	METAL BAND	2
21	BAND-15	METAL BAND	2