

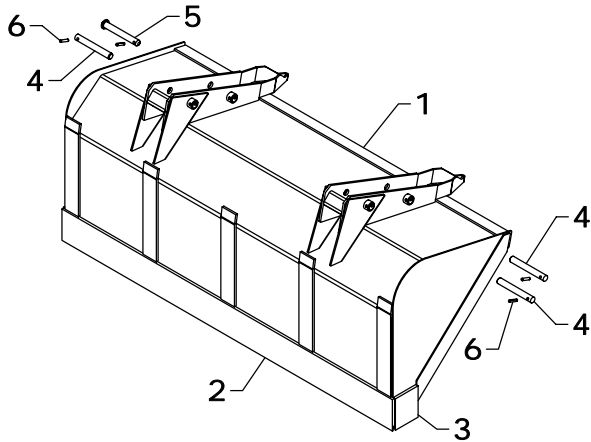
WL-21 LOADER FRAME AND TOWER REPLACEMENT PARTS

| REF # | PART # | DESCRIPTION | QTY. |
|-------|-------------|-------------------|------|
| 1 | JT-12AS | TOWER | 1 |
| 2 | JF-4AS | FRAME | 1 |
| 3 | BT-18AS - R | FLIP LOCK (RIGHT) | 1 |
| 4 | BT-18AS - L | FLIP LOCK (LEFT) | 1 |
| 5 | JF-56AS | OUTER GAUGE ROD | 1 |
| 6 | JF-57AS | GAUGE ROD | 1 |
| 7 | JF-65 | PIN | 1 |

| REF # | PART # | DESCRIPTION | QTY. |
|-------|------------|----------------------|------|
| 8 | JT-20 | PIN | 5 |
| 9 | LF-81 | LIFT PIN | 2 |
| 10 | HHS1011028 | 5/8" X 1 3/4" BOLT | 2 |
| 11 | ZER1805 | GREASE FITTING | 4 |
| 12 | CTK0400032 | 1/4" X 2" COTTER KEY | 1 |
| 13 | DRP0600028 | DOUBLE ROLL PIN | 8 |

WESTENDORFMFG PWB212050

WESTENDORF MFG CO., INC. • PH: (712) 423-2762 • FAX: (712) 423-1460 • sales@westendorfmfg.com • www.loaders.com

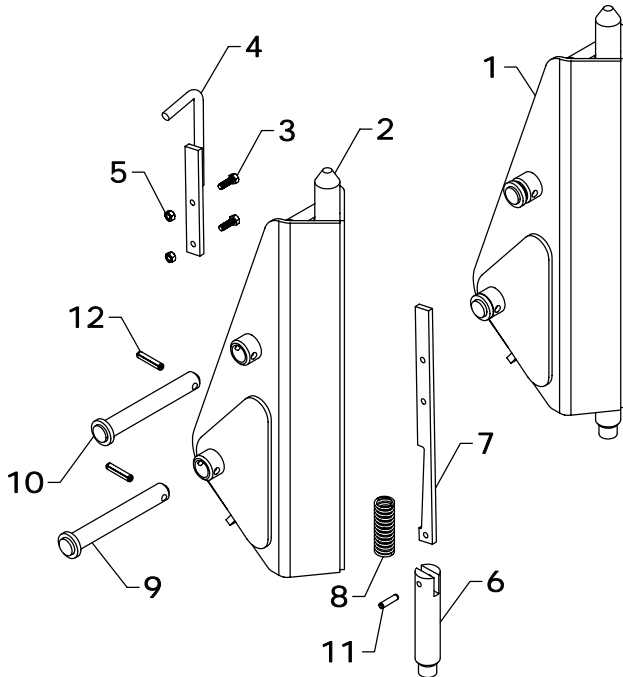


WL-21 BUCKET

| REF # | PART # | DESCRIPTION | QTY. |
|-------|------------|------------------------|------|
| 1 | 72P214 | 72" BUCKET | 1 |
| 2 | JB-14 | 72" BLADE | 1 |
| 3 | SB-15 | BLADE | 2 |
| 4 | LF-52 | PIN | 3 |
| 5 | QC-306AS | PIN | 1 |
| 6 | RLP0600028 | 3/8" X 1 3/4" ROLL PIN | 4 |

NOTE: *Check width of the bucket and use the part number that matches. If your size is not shown, contact Westendorf Mfg. Co.

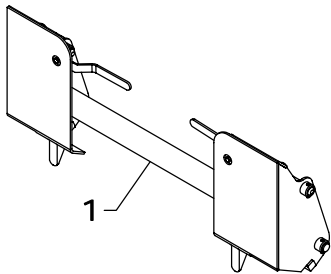
WL-21 OPTIONAL SNAP-ATTACH™ COUPLER (C-6)



| REF # | PART # | DESCRIPTION | QTY. |
|-------|------------|-------------------------|------|
| 1 | QC-301COM | MALE COUPLER COMPLETE | 1 |
| 2 | QC-301AS | MALE COUPLER | 1 |
| 3 | HHS0518016 | 5/16" X 1" BOLT | 2 |
| 4 | QC-6AS | LATCH HANDLE | 1 |
| 5 | HTN0518 | 5/16" LOCK NUT | 2 |
| 6 | QC-3 | BOTTOM LATCH PIN | 1 |
| 7 | QC-8 | LATCH | 1 |
| 8 | QC-12 | SPRING | 1 |
| 9 | QC-306AS | PIN | 1 |
| 10 | LMF-18AS | CYLINDER PIN | 1 |
| 11 | RLP0500020 | 5/16" X 1 1/4" ROLL PIN | 1 |
| 12 | DRP0600028 | DOUBLE ROLL PIN | 2 |

NOTE: Qty. shows the number of parts you will receive if you place an order using these part numbers. C-6 is two(QC-301COM) couplers.

WL-21 OPTIONAL SKID STEER COUPLER



| REF # | PART # | DESCRIPTION | QTY |
|-------|--------|--------------------|-----|
| 1 | C-31 | SKID STEER COUPLER | 1 |

WL SERIES COSMETICS

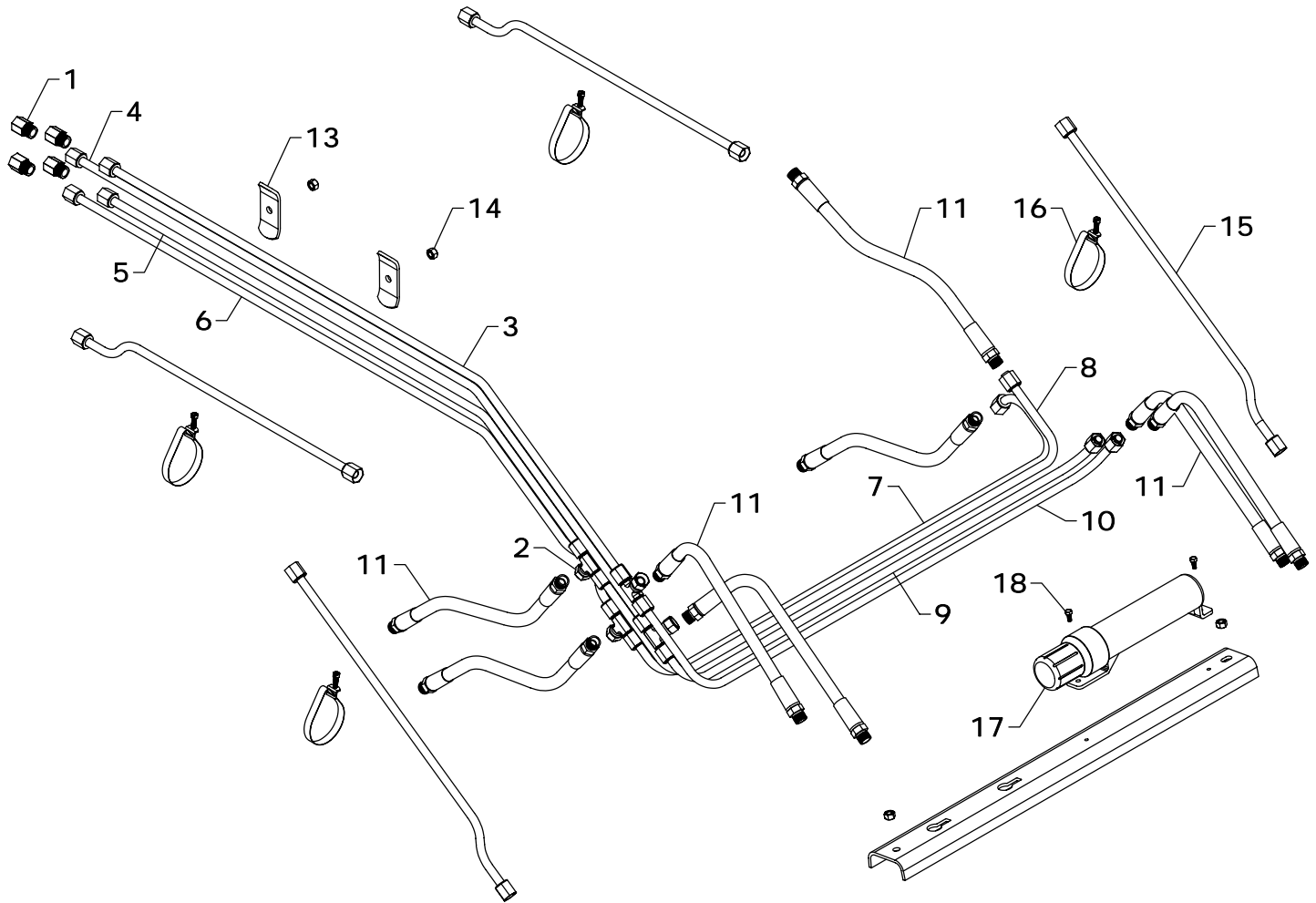
| REF # | PART # | DESCRIPTION | QTY. |
|-------|----------|-------------------|------|
| 1 | DEC-21 | DECAL KIT (WL-21) | 1 |
| | DEC-27 | DECAL KIT (WL-27) | 1 |
| | DEC-42 | DECAL KIT (WL-42) | 1 |
| 2 | V-5403-A | RED SPRAY PAINT | 1 |
| | V-9524-A | BLACK SPRAY PAINT | 1 |

| REF # | PART # | DESCRIPTION | QTY |
|-------|----------|--------------------|-----|
| 3 | V-5403-P | PINT RED PAINT | 1 |
| | V-9524-P | PINT BLACK PAINT | 1 |
| 4 | V-5403-Q | QUART RED PAINT | 1 |
| | V-9524-Q | QUART BLACK PAINT | 1 |
| 5 | V-5403-G | GALLON RED PAINT | 1 |
| | V-9524-G | GALLON BLACK PAINT | 1 |

NOTE: Warning decals are available at no charge. If they become damaged or missing, order part numbers DE-DWWS, DE-WWWS, DE-PP, DE-21 & DE-TX

WESTENDORFMFG PWB212050

WESTENDORF MFG. CO., INC. • PH: (712) 423-2762 • FAX: (712) 423-1460 • sales@westendorfmfg.com • www.loaders.com



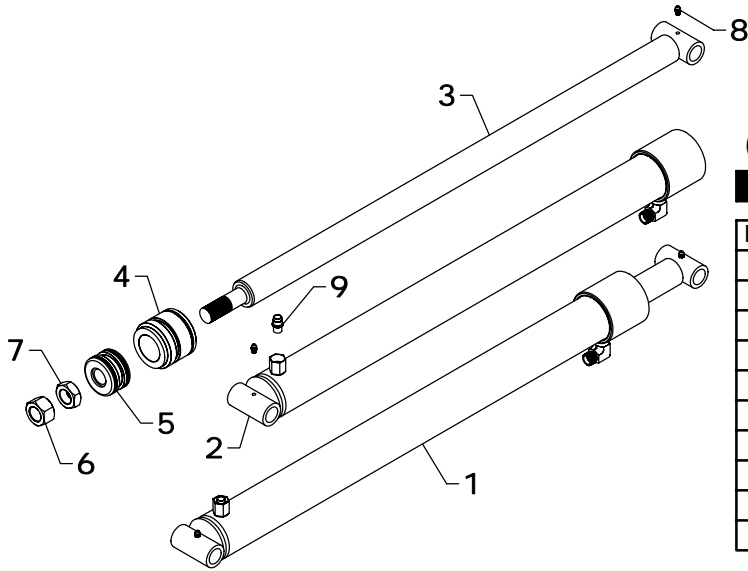
WL-21 HYDRAULIC REPLACEMENT PARTS

| REF # | PART # | DESCRIPTION | QTY. |
|-------|----------|------------------|------|
| 1 | PF-FFC8 | FEMALE CONNECTOR | 4 |
| 2 | PF-FSBT8 | SWIVEL NUT TEE | 4 |
| 3 | OLT-4 | OIL LINE | 1 |
| 4 | OLT-5 | OIL LINE | 1 |
| 5 | OLT-6 | OIL LINE | 1 |
| 6 | OLT-7 | OIL LINE | 1 |
| 7 | OLT-8 | OIL LINE | 1 |
| 8 | OLT-9 | OIL LINE | 1 |
| 9 | OLT-10 | OIL LINE | 1 |

| REF # | PART # | DESCRIPTION | QTY. |
|-------|-----------|--------------------|------|
| 10 | OLT-11 | OIL LINE | 1 |
| 11 | H06020-FF | 3/8" X 20" HOSE | 8 |
| 12 | OH-2 | OIL LINE PROTECTOR | 1 |
| 13 | OH-3 | OIL LINE HOLDER | 2 |
| 14 | HTN0616 | 3/8" LOCK NUT | 4 |
| 15 | OLT-1 | OIL LINE | 4 |
| 16 | BAND-12 | OIL LINE HOLDER | 4 |
| 17 | GP-2 | MANUAL CANISTER | 1 |
| 18 | EC-M03 | SELF TAPPING SCREW | 2 |

WESTENDORFMFG PWB212050

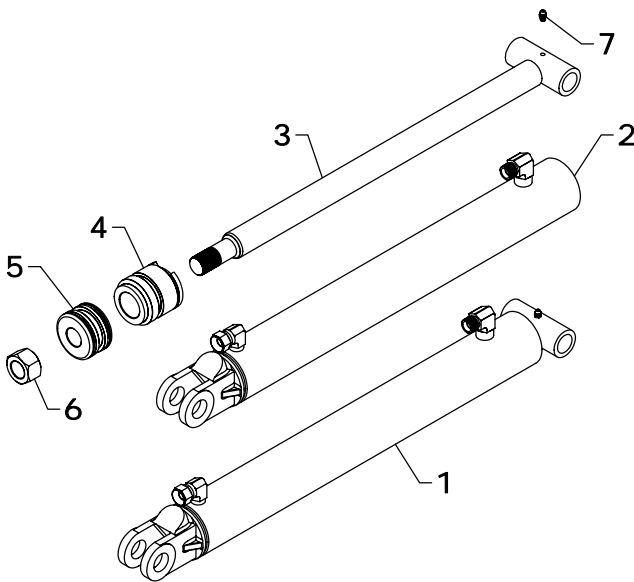
WESTENDORF MFG. CO., INC. • PH: (712) 423-2762 • FAX: (712) 423-1460 • sales@westendorfmfg.com • www.loaders.com



WL-21 LIFT CYLINDER REPLACEMENT PARTS

| REF # | PART # | DESCRIPTION | QTY. |
|-------|---------|----------------|------|
| 1 | L-9 | LIFT CYLINDER | 1 |
| 2 | L-901 | BARREL | 1 |
| 3 | L-910 | RAM | 1 |
| 4 | G-B | GLAND | 1 |
| 5 | P-A | PISTON | 1 |
| 6 | HFN1614 | 1" NUT | 1 |
| 7 | HJN1614 | 1" JAM NUT | 1 |
| 8 | ZER1805 | GREASE FITTING | 2 |
| 9 | L-819AS | PORT | 1 |
| 10 | #5CK | REPAIR KIT | * |

*NOTE: * Repair kit contains parts to repair one cylinder*



WL-21 / WL-27 / WL-42 BUCKET CYLINDER REPLACEMENT PARTS

| REF # | PART # | DESCRIPTION | QTY. |
|-------|---------|-----------------|------|
| 1 | B-1 | BUCKET CYLINDER | 1 |
| 2 | B-101 | BARREL | 1 |
| 3 | B-110 | RAM | 1 |
| 4 | G-A | GLAND | 1 |
| 5 | P-A | PISTON | 1 |
| 6 | HFN1614 | 1" NUT | 1 |
| 7 | ZER1805 | GREASE FITTING | 1 |
| 8 | #1CK | REPAIR KIT | * |

*NOTE: * Repair kit contains parts to repair one cylinder*

STEPS TO REPAIR CYLINDER

- 1) Extend the ram out as far as possible.
- 2) At the ram end of the cylinder barrel you will find a snap ring located either on the face or inside the notch of the gland.
- 3) Locate the snap ring eyes (you may need to turn the gland inside the barrel to find the snap ring eyes). Compress the snap ring with snap ring pliers.
- 4) Remove the ram assembly (ram, gland, & piston) from barrel.
- 5) Notice the direction they're pointing so they can be properly re-assembled.
- 6) Remove the jam nut and/or hex nut from the end of the ram.
- 7) Remove the old seals and rings and replace them with the new seals and rings. (Seal kits are packaged for several different cylinders. You may have extra parts)

- 8) Clean cylinder with cleaner and a clean lint free cloth.
- 9) Lubricate the seals and rings to aid assembly.
- 10) Assemble the cylinder by reversing the order.

CYLINDER REPAIR TIPS

- When disassembling cylinders, keep the parts in correct orientation. Remove parts in sequence.
- Note the direction of the piston and gland. Lay out old seals and parts as they are removed.
- Assemble cylinder in proper order; lubricate to aid assembly.