

BC-6000 BRUSH CRUSHER™ REPLACEMENT PARTS

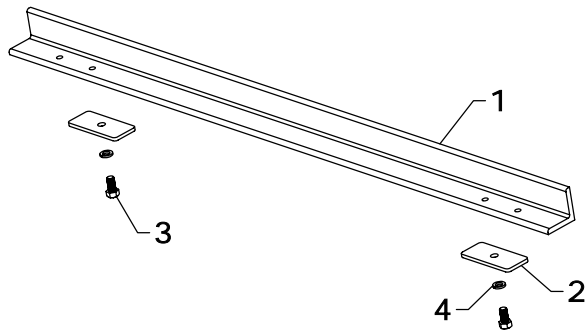
REF #	PART #	DESCRIPTION	QTY.
1	BCP-30AS	REAR TOOTH	2
2	BCP-9AS	UPPER TOOTH	2
3	M-15	CYLINDER	2
4	RAF-24	PIN	2
5	RAF-41	SELF LEVELING PIN	2
6	XAF-55	LINKAGE PIN	2
7	DRP0600032	DOUBLE ROLL PIN	2
8	SR-C08	SNAP RING	4

REF #	PART #	DESCRIPTION	QTY.
9	ZER1805	GREASE FITTING	2
10	PF-TB0806	PIPE BRANCH SWIVEL NUT UNION	2
11	LM-13	HIGH PRESSURE FEMALE COUPLER	1
12	LM-14	HIGH PRESSURE MALE COUPLER	1
13	FHW16025-Y	25" FLEX HOSE WRAP	1
14	HK-92	4 - 1/4" X 96" HOSE (NOT SHOWN)	1
15	PF-HB0804	1/2" TO 1/4" HEX BUSHING	2
16	RAF-65	WASHER	2

NOTE: * See M-15 cylinder parts page for parts breakdown and steps to repair cylinder

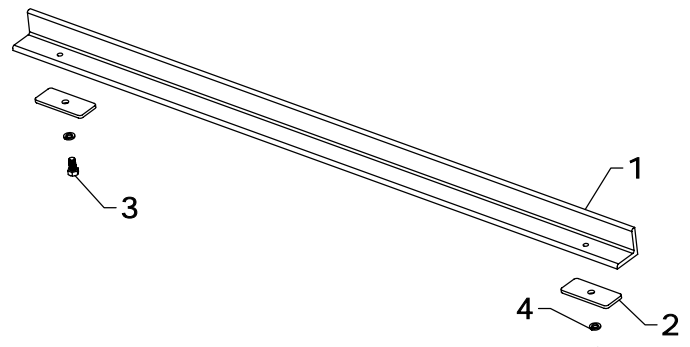
WESTENDORFMFG PWB115070

WESTENDORF MFG CO., INC. • PH: (712) 423-2762 • FAX: (712) 423-1460 • sales@westendorfmfg.com • www.loaders.com



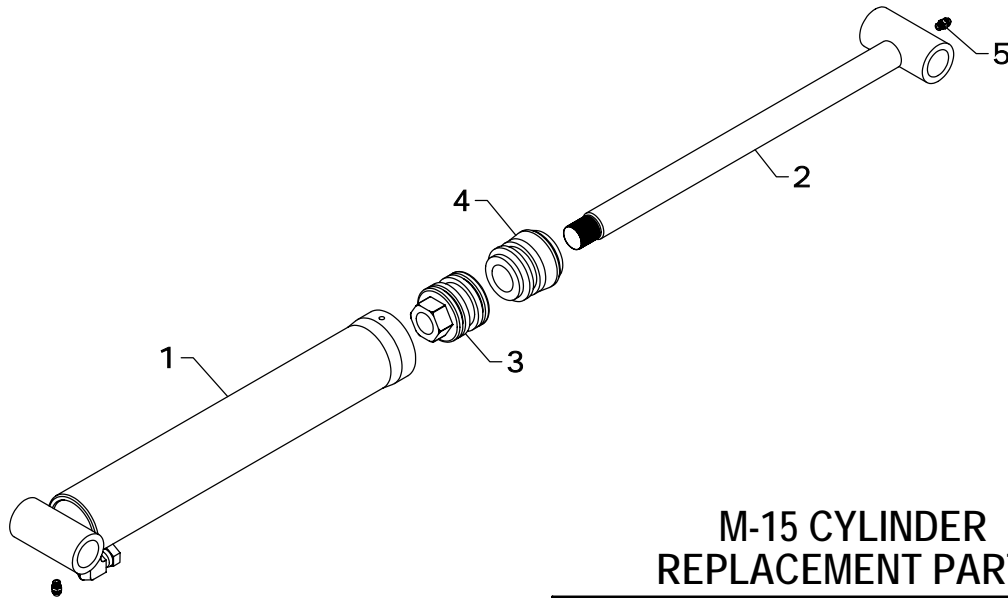
OPT. BCK-001 TIE BAR KIT (20/40 SERIES)

REF #	PART #	DESCRIPTION	QTY.
1	BCP-34	ANGLE SUPPORT	1
2	BCP-35	LOCK PLATE	2
3	HHS0813016	1/2" X 1" BOLT	2
4	LWM08	1/2" LOCKWASHER	2



OPT. BCK-003 TIE BAR KIT (70 SERIES)

REF #	PART #	DESCRIPTION	QTY.
1	BCP-36	ANGLE SUPPORT	1
2	BCP-35	LOCK PLATE	2
3	HHS0813016	1/2" X 1" BOLT	2
4	LWM08	1/2" LOCKWASHER	2



M-15 CYLINDER REPLACEMENT PARTS

REF #	PART #	DESCRIPTION	QTY.
1	M-1501	BARREL ASSEMBLY	1
2	M-1510	RAM ASSEMBLY	1
3	P-J	PISTON	1
4	G-V	GLAND	1
5	ZER1805	GREASE FITTING	2
6	#34CK	REPAIR KIT	*

*NOTE: * Repair kit contains parts to repair one cylinder*

STEPS TO REPAIR CYLINDER

- 1) Extend the ram out as far as possible.
- 2) At the ram end of the cylinder barrel you will find a snap ring located either on the face of the gland or inside the notch of the gland.
- 3) Locate the snap ring eyes (you may need to turn the gland inside the barrel to find the snap ring eyes). Compress the snap ring with snap ring pliers.
- 4) Remove the ram assembly (ram, gland, & piston) from barrel.
- 5) Notice the direction they are pointing so they can be properly re-assembled.
- 6) Remove the piston and gland from the ram.
- 7) Remove the old seals and rings and replace them with the new seals and rings. (Seal kits are packaged for several different cylinders. You may have extra parts)
- 8) Clean the cylinder with cleaner and a clean lint free cloth.
- 9) Lubricate the seals and rings to aid assembly.
- 10) Assemble the cylinder by reversing the order.

CYLINDER REPAIR TIPS

- When disassembling cylinders, keep the parts in correct orientation. Remove parts in sequence.
- Note the direction of the piston and gland. Lay out old seals and parts as they are removed.
- Assemble cylinder in proper order; lubricate to aid assembly.